



QG系列变量轴向柱塞泵

I、特点 Feature.....	01
II、型号说明 Ordering code.....	02
in、参数表（理论值）The Parameter List（theoretical values）.....	03
IV、推荐管道或管接头通径尺寸 Suggested dimensions of the pipe and pipe joint	03
V、外形尺寸 Overall dimension.....	04
VI、控制装置 Control devices.....	05 - 08
vn、油泵电机组 The oil pump motor combination	08

JG系列变量轴向柱塞泵

I、特点 Feature.....	11
II、型号说明 Ordering code.....	12
III、参数表（理论值）The Parameter List（theoretical values）.....	13
IV、夕卜形尺寸 Overall dimension.....	13
V、推荐管道或管接头通径尺寸 Suggested dimensions of the pipe and pipe joint	14
VI、控制装置 Control devices.....	14 - 18

CY14-1B系列变量轴向柱塞泵

I、型号说明 Ordering code.....	19
nx 结构图 Construction.....	20
in、参数表（理论值）The Parameter List（theoretical values）.....	20
IV、控制装置 Control devices.....	21
V、推荐管道或管接头通径尺寸 Suggested dimensions of the pipe and pipe joint.....	21
VI、夕卜形尺寸 Overall dimension.....	22 - 32

油泵电机组 The oil pump motor combination

I、参数表（理论值）The Parameter List（theoretical values）.....	33
II、型号说明 Type Code.....	33
in. 夕卜形尺寸 Overall dimension（表 2、3、4）.....	34
- 42	

使用须知 Utilization Notice

I、使用须知 Utilization Notice	43 - 45
---------------------------------	---------



QG系列变量轴向柱塞泵

Variable displacement pump QG

精工牌



>> 专利产品 <<

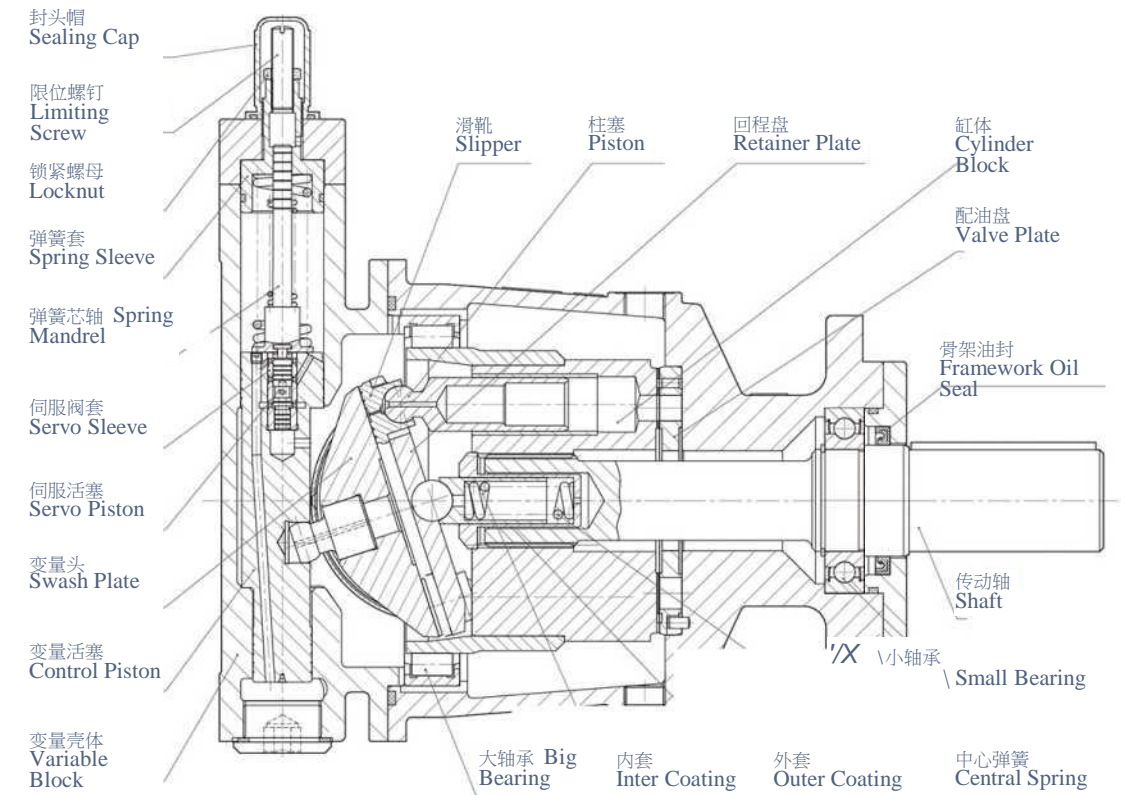
专利号: ZL 2014 2 0840442.2

ZL 2015 3 0002399.2

特点 Feature

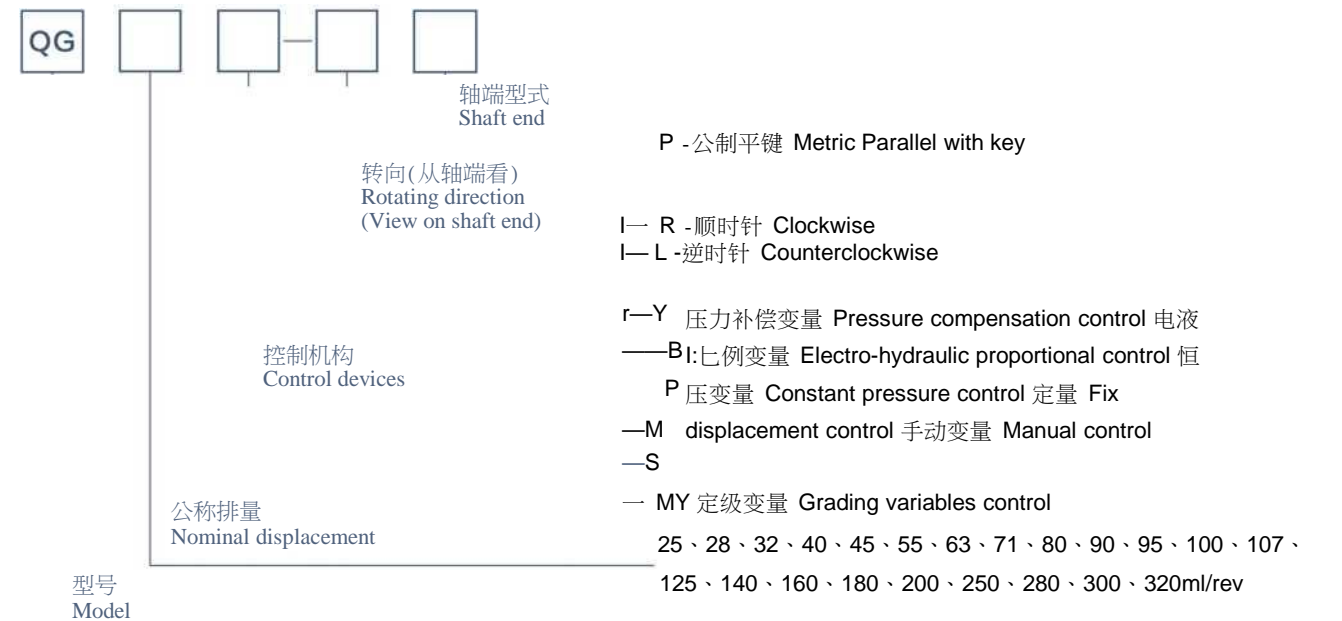
- 1、本产品是一种斜盘式轴向柱塞变量泵，专为开式回路液压驱动设计的；
- 2、额定工作压力可达31.5MPa,瞬时最高压力可达40MPa;
- 3、排量规格多，功率密度高；
- 4、优良的吸入性能；
- 5、外观新颖、优良的功率/重量比；
- 6、噪声低、寿命长；
- 7、与CY泵一致的安裝连接尺寸，与SAE通用的油口法兰设计。

- 1、This product is an axial piston pump in swash plate design for hydrostatic drives in open circuit operation ;
- 2、Its rated operating pressure is up to 31.5MPa, and the instantaneous high pressure can reach 40MPa;
- 3、Various displacements .high power density;
- 4、Excellent suction performance;
- 5、New appearance .Excellent power/Weight ratio;
- 6、Low noise, Long lifespan;
- 7、The same mounting flange with CY pump and design for SAE oil flange.



示例：压力补偿变量轴向柱塞泵(Y)结构示意图 Example: pressure compensation control (Y) Pump construction

质型号说明 Ordering code



型号 Model

-----后东高压油泵有限公司 Qidong high pressure oil pump co.,LTD.

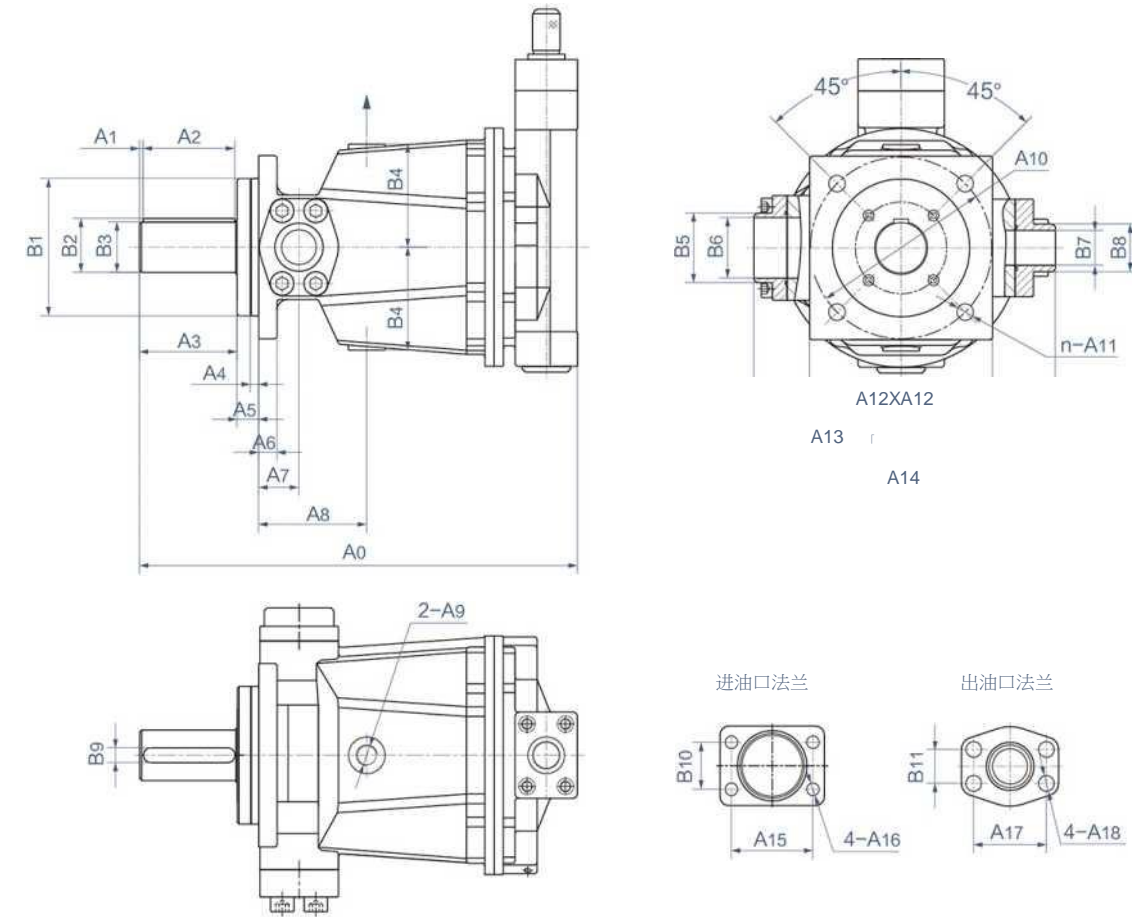
in 参数表 (理论值) The Parameter List (theoretical values)

型号 Model	排量(ml/rev) displacement	额定压力(MPa) Rated power	额定转速(r/min) Rated power	1500rpm最大功率(KW) Max.power
QG25	25	31.5	1500	20
QG28	28	31.5	1500	22
QG32	32	31.5	1500	25
QG40	40	31.5	1500	31
QG45	45	31.5	1500	35
QG55	55	31.5	1500	43
QG63	63	31.5	1500	50
QG71	71	31.5	1500	56
QG80	80	31.5	1500	63
QG90	90	31.5	1500	71
QG95	95	31.5	1500	75
QG100	100	31.5	1500	79
QG107	107	31.5	1500	84
QG125	125	31.5	1500	98
QG140	140	31.5	1500	110
QG160	160	31.5	1500	126
QG180	180	31.5	1500	142
QG200	200	31.5	1500	157
QG250	250	31.5	1500	197
QG280	280	31.5	1500	220
QG300	300	31.5	1500	236
QG320	320	31.5	1500	252

IV 推荐管道或管接头通径尺寸 Suggested dimensions of the pipe and pipe joint

型号 Model	进油口 (mm) Inlet	出油口 (mm) Service Line	泄油口 (mm) Drain port
QG25/28/32/40/45	35	4>20	mEO
QG55/63/71/80/90	4<P40	>625	14
QG95/100/107/125		32	& 016
QG140/160/180/200	N<P66	N<P38	
QG250/280/300/320	nNO	50	& 4) 28

S 外形尺寸 Overall dimension?



型号Model	Ao	A1	A2	A3	A4	A5	A6	A7	A8	A9	A10	An	A12	A13	A14
QG25/28/32/40/45Y	300	4	45	54	9	19	15	30	78	M14x1.5	E25	012	125	118	236
QG55/63/71/80/90Y	355	4	50	62		19	16	35	92	M18x1.5	0155	<t>14	155	135	271
QG95/100/107/125Y	385	4	60	70		21	16	35	97	M22 x 1.5	0155	0 14	155	144	294
QG140/160/180/200Y	478	4	100	109		21	20	44	118	M22x1.5	4>198	018	200	160.5	329
QG250/280/300/320Y	567	5	100	113		21	25	75	170	M33x2	4) 230	024	230	192.5	392

型号Model	A15	A16	A17	A18	Bi(°)	B2	B3(h6)	B4	B5	B6	B7	B8	B9(h9)	B10	B11
QG25/28/32/40/45Y	58.7	11	50.8	11	0100	33	0 30	71	042	034	020	028	8	30.2	23.8
QG55/63/71/80/90Y	70	13	57.1	13	0120	42.8	040	88	0 50	040	025	035	12	35.7	27.8
QG95/100/107/125Y	77.8	13	66.7	15	0120	42.8	<P40	96	<P60	050	4) 32	043	12	42.9	31.6
QG140/160/180/200Y	89	13.5	79.4	17	0150	59	0 55	112.5	0 76	066	0 38	052	16	50.8	36.7
QG250/280/300/320Y	120.7	17	96.8	21	0180	63.9	<P60	135	<P100	090	0 50	065	18	69.9	44.5

QG*B的进出油口方向，与其它变量形式泵的进出油口方向正好相反，即从轴端看，顺时针旋转(正转泵)时进油口在右侧，出油口在左侧。

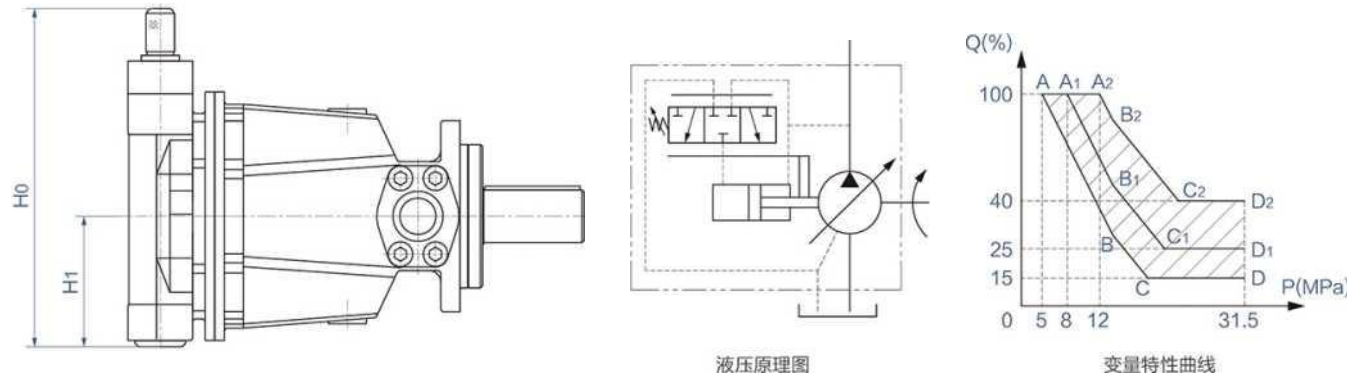
QG*B oil pump in and out, and its form variables mouth direction of pass in and out of the oil pump mouth is exactly the opposite, that is, from the shaft watch, clockwise (are turning pump) inlet on the right, the outlet on the left.

VI 控制装置 Control devices

(1)、Y- 压力补偿变量 Pressure compensation control

压力补偿变量泵的出口流量随出口压力的大小近似地在一定范围内按恒功率曲线变化。调节流量特性时，可先将限位螺钉拧至上端，根据所需的流量和压力变化范围，调节弹簧套，使其流量开始发生变化时的初始压力符合要求，然后将限位螺钉拧至最高压力时的流量不再发生变化，其中间的流量与压力变化关系由泵的本身设计所决定。

The outlet flow of Pressure compensation variable pump change with the size of the outlet pressure approximately in a certain range according to the constant power curve changes. Adjust flow characteristics, can put the limit screws to the top first and according to need pressure range, adjusting spring set, make its initial pressure meet the requirements when the flow changed and then limit screws to the highest pressure of the flow of change, of which no longer flow and pressure changes between the relationship of the pump design decision by itself.

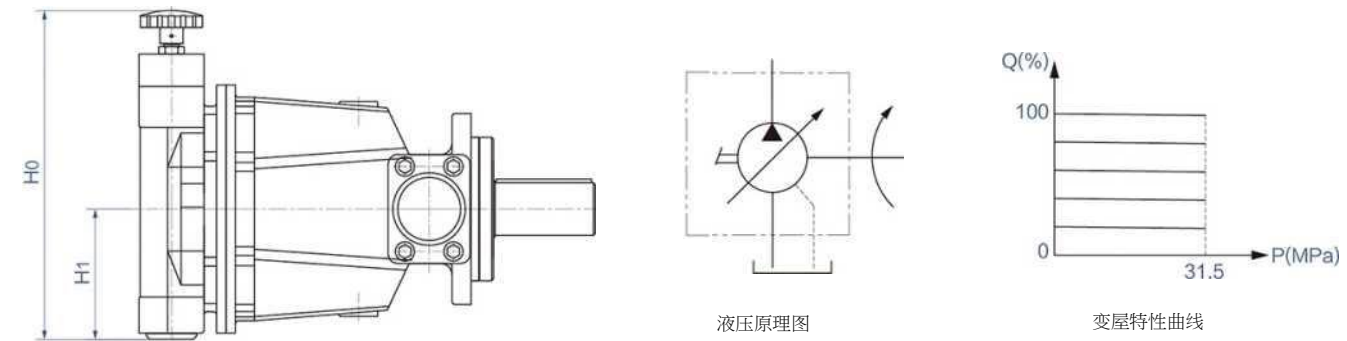


特性尺寸			QG95/100/107/125Y	QG140/160/180/200Y	QG250/280/300/320Y I
«SD					

(2)、S- 手动变量 Manual control

旋转手轮进行排量的无级调节，适用于不频繁变量，且不需要远距离操纵的情况下。

Stepless adjustment of displacement by turning the handwheel, apply to the infrequent variables and don't need a remote condition.

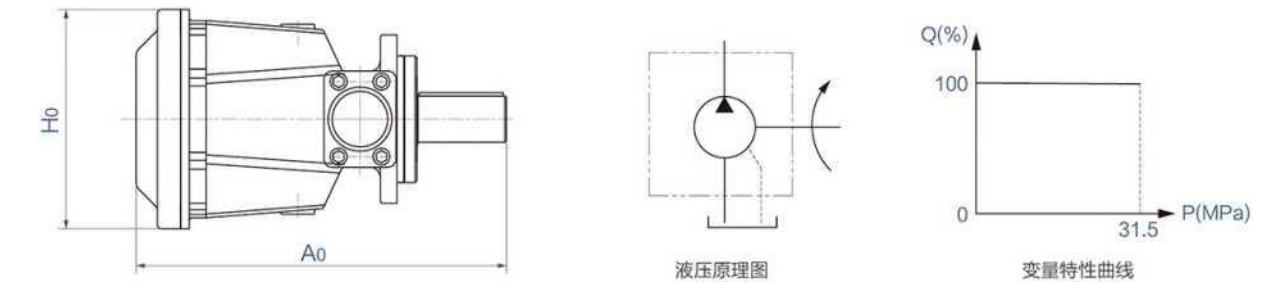


特性尺寸			QG95/100/107/125S	QG140/160/180/200S	QG250/280/300/320S
co n					

(3)、M_ 定量 Fix displacement control

流量不可变化的泵。

The pump flow is can't be changed.

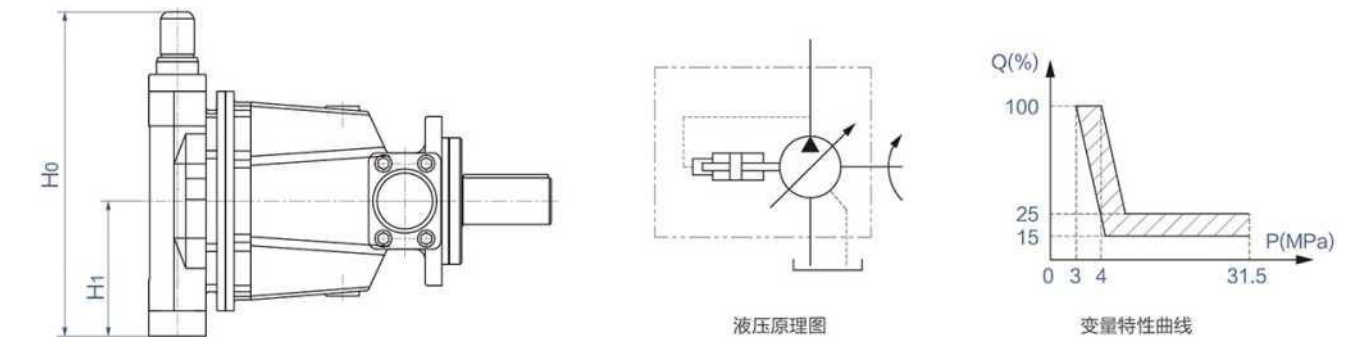


特性尺寸	QG25/28/32/40/45M	QG55/63/71/80/90M	QG95/100/107/125M	QG140/160/180/200M	QG250/280/300/320M
HO	<P176	0208	0228	◎ 260	0310
AO	272	321	350.5	440	525

(4)、MY-定级变量 Grading variables control

这种泵是依靠内控油压操纵变量机构。泵的压力调节范围比较小，油泵在3~4MPa时产生变量后，流量迅速减小至所要求的高压流量值。这种泵实际上相当于高低压组合泵，泵的驱动功率可参照压力补偿变量泵的功率选择方法进行计算。

This pump is rely on internal control hydraulic control variable instiutions.The pump pressure adjustment range are small, hydraulic in 3 - 4MPa generated when the variables, flow diminishes quickly to the requirements of high pressure flow value. This pump is equivalent to the combination of high and low voltage actually pump, pump drive power choose reference may be made to the pressure compensation variable pump power selection method to calculate.

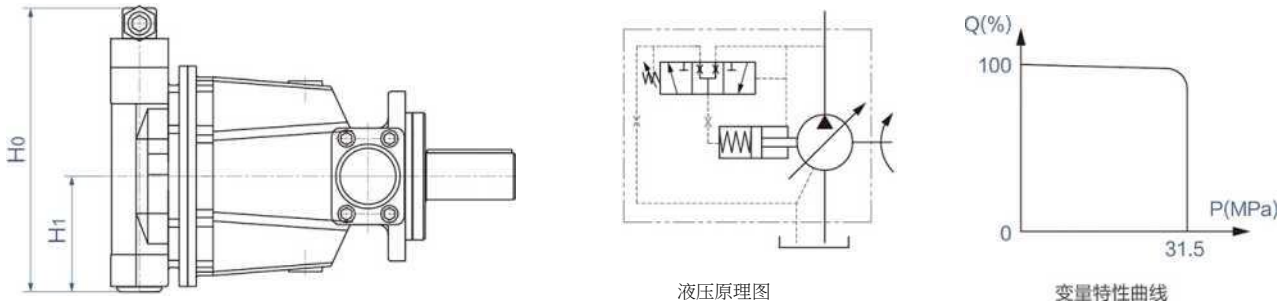


特性尺寸	QG25/28/32/40/45MY	QG55/63/71/80/90MY	QG95/100/107/125MY	QG140/160/180/200MY	QG250/280/300/320MY
HO	285.5	321.5	334	384	434
H1	117.5	133.5	136	160	185

(5) P-恒压变量 Constant pressure control

在泵的调节范围内，能使系统保持恒定的工作压力。当泵的控制压力通过泵上的恒压阀设定后，在系统达到设定的压力时，泵的排量迅速自动下调为仅是维持该恒定的系统压力所需的排量。系统的压力可通过恒压阀进行无级调节，且系统溢流阀仅作安全阀使用，其调定的压力应大于恒压阀设定压力的15~20%。

In the adjustment of the pump range, can make the system maintains a constant pressure of work. When the pump pressure under control though the constant pressure pump valve settings, in the system to achieve the set pressure, pump emissions displacement rapidly to only be able to maintain automatic cut the constant pressure of the system for emissions. The system pressure can through the constant pressure valve stepless adjustment, and the system relief valves are for the relief valve function, its adjustment of pressure should be greater than constant pressure valve set up the pressure of 15 - 20% .

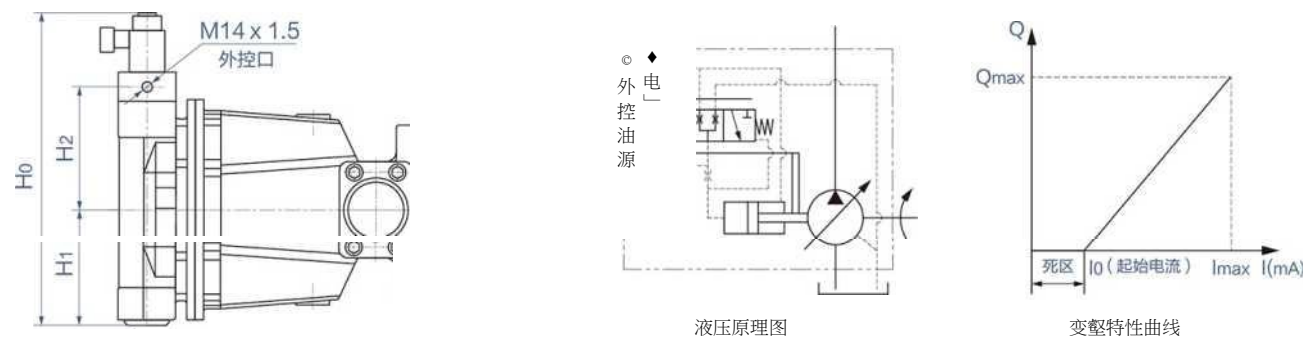


特性尺寸	QG25/28/32/40/45P	QG55/63/71/80/90P	QG95/100/107/125P	QG140/160/180/200P	QG250/280/300/320P

(6) B-电液比例变量 Electro-hydraulic proportional control

这种泵采用外控油压来控制变量机构，利用改变输入比例电磁铁的电流大小来改变泵的流量，输入电流与泵的流量成正比例的关系。起始电流一般为100~150mA,最大控制电流一般为650~800mA。

This pump is rely on external control hydraulic control variable institutions, input proportional electromagnet by changing the size of the current to change the pump flow, input current is proportional relationship to the pump flow. The starting current general is 100 ~ 150 mA, the biggest control current general is 650 ~ 800 mA .



	QG25/28/32/40/45B				QG250/280/300/320B I

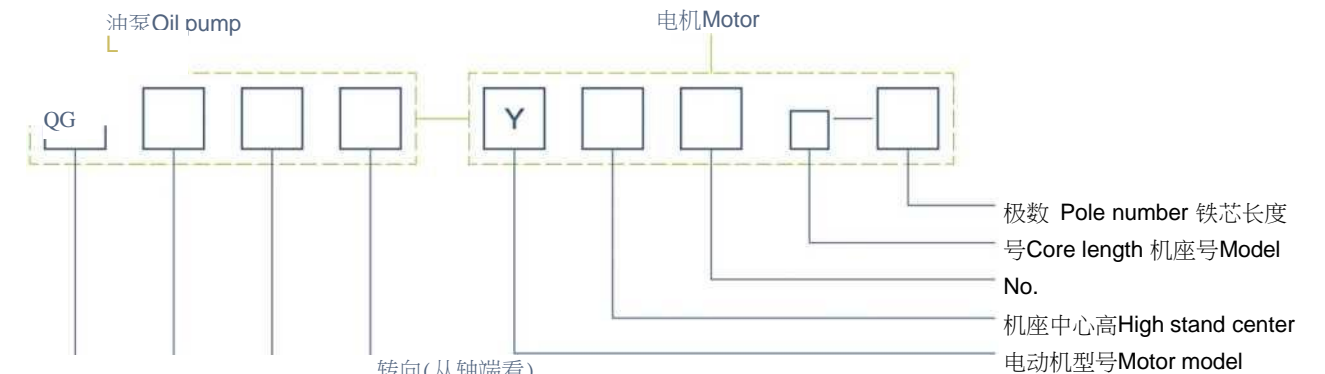
外控油压力，排量125ml/r以上的泵为10~15MPa,排量100ml/r以下的的泵为6~10MPa。使用的工作压力低，外控油压力也可相应降低。推荐外控泵的流量为Q控mq/t(l/min), q见下表。

For the oil pressure, the pump displacement more than 125ml/r is 10 ~ 15MPa, the pump displacement blew than 100ml/r is 6 ~ 10MPa. Using low working pressure, the oil pressure can be reduced. The control pump flow is recommended for Q 控五 q/t(l/min), q see the table below.

型号/规格	QG25/28/32/40/45	QG55/63/71/80/90	QG95/100/107/125	QG140/160/180/200	QG250/280/300/320
q (L/min)	10.8	24.6	24.6	36	41

vi 油泵电机组合 The oil pump motor combination

1、型号说明 Ordering code

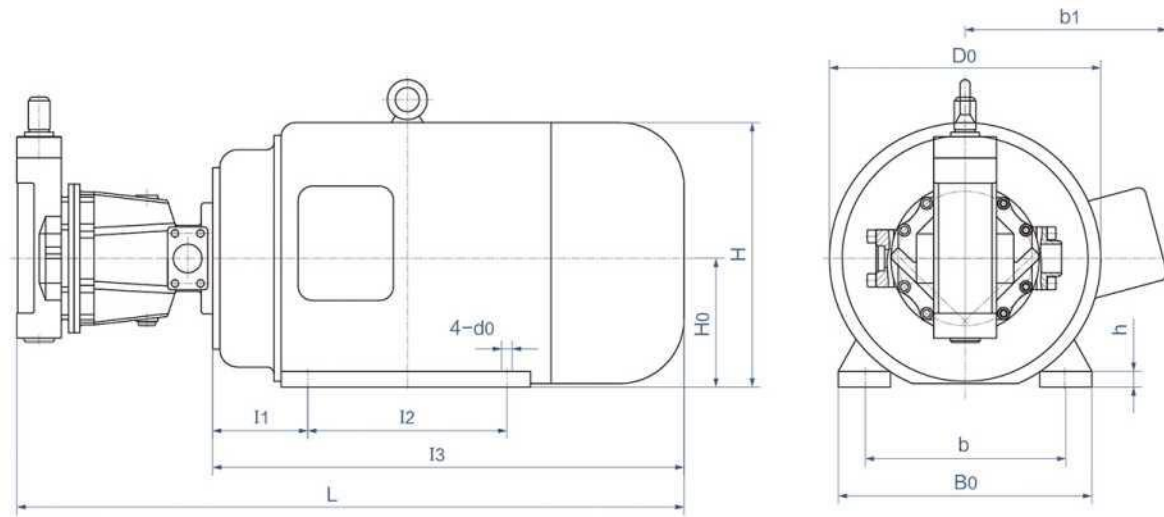


- R - 顺时针 Clockwise
- L - 逆时针 Counterclockwise
- γ 压力补偿变量 Pressure compensation control
- B 电液比例变量 Electro-hydraulic proportional control
- P 恒压变量 Constant pressure control
- M 定量 Fix displacement control
- S 手动变量 Manual control
- MY 定级变量 Grading variables control

公称排量 Nominal displacement 25、28、32、40、45、55、63、71、80、90、95、100、107、125、140、160、180、200、250、280、300、320ml/rev

型号 Model 启东高压油泵有限公司 Qidong high pressure oil pump co.,LTD.

2、外形尺寸 Overall dimension



油泵相关尺寸请参考QG外形尺寸

Oil pump please refer to the relevant size QG overall dimensions

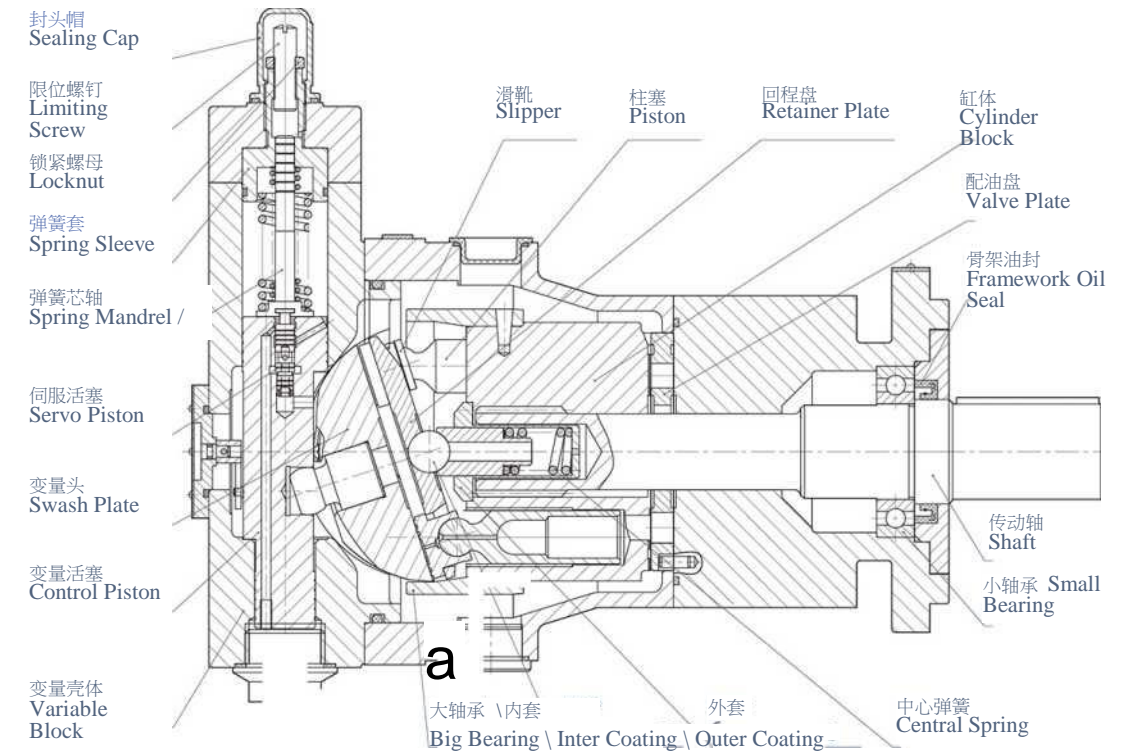
油泵规格	油泵电机组 型号	安装尺寸(mm)											
		I1	I2	I3	L	Ho	H	h	Do	Bo	b	bi	do
QG25/28/32/40/45	QG*-Y112M	92	140	380	607	112	265	15	240	245	190	190	12
	QG*-Y132S	107	140	410	637	132	315	18	275	280	216	210	12
	QG*-Y132M	107	178	445	672	132	315	18	275	280	216	210	12
	QG*-Y 160M	119	210	545	772	160	385	20	335	330	254	265	15
	QG*-Y 160L	119	254	590	817	160	385	20	335	330	254	265	15
	QG*-Y180M	133	241	622	849	180	430	22	380	355	279	285	15
	QG*-Y180L	133	279	660	887	180	430	22	380	355	279	285	15
QG55/63/71/80/90	QG*-Y132M	107	178	445	685	132	315	18	275	280	216	210	12
	QG*-Y160M	119	210	545	785	160	385	20	335	330	254	265	15
	QG*-Y 160L	119	254	590	830	160	385	20	335	330	254	265	15
	QG*-Y180M	133	241	622	862	180	430	22	380	355	279	285	15
	QG*-Y180L	133	279	660	900	180	430	22	380	355	279	285	15
	QG*-Y 200L	150	305	675	915	200	475	25	420	395	318	315	19
	QG*-Y 225S	143	286	705	945	225	530	28	475	435	356	345	19
	QG*-Y 225M	143	311	680	920	225	530	28	475	435	356	345	19
QG*-Y250M	161	349	784	1024	250	575	30	515	490	406	385	24	

油泵规格	油泵电机组 型号	安装尺寸(mm)											
		I1	I2	I3	L	Ho	H	h	Do	Bo	b	bi	do
QG95/100/107/125	QG*-Y160M	119	210	545	839	160	385	20	335	330	254	265	15
	QG*-Y160L	119	254	590	884	160	385	20	335	330	254	265	15
	QG*-Y 180M	133	241	622	916	180	430	22	380	355	279	285	15
	QG*-Y180L	133	279	660	954	180	430	22	380	355	279	285	15
	QG*-Y 200L	150	305	675	969	200	475	25	420	395	318	315	19
	QG*-Y225S	143	286	705	999	225	530	28	475	435	356	345	19
	QG*-Y225M	143	311	680	974	225	530	28	475	435	356	345	19
	QG*-Y250M	161	349	784	1078	250	575	30	515	490	406	385	24
QG140/160/180/200	QG*-Y 180M	133	241	622	970	180	430	22	380	355	279	285	15
	QG*-Y 180L	133	279	660	1008	180	430	22	380	355	279	285	15
	QG*-Y200L	150	305	675	1023	200	475	25	420	395	318	315	19
	QG*-Y 225S	143	286	705	1053	225	530	28	475	435	356	345	19
	QG*-Y225M	143	311	680	1028	225	530	28	475	435	356	345	19
	QG*-Y250M	161	349	784	1132	250	575	30	515	490	406	385	24
	QG*-Y280S	200	368	786	1134	280	640	35	580	550	457	410	24
	QG*-Y280M	200	419	927	1275	280	640	35	580	550	457	410	24
	QG*-Y315S	222	406	1120	1468	315	865	45	645	640	508	576	28
	QG*-Y315M	222	457	1170	1518	315	865	45	645	640	508	576	28
QG*-Y 315L	222	508	1170	1518	315	865	45	645	640	508	576	28	
QG250/280/300/320	QG*-Y225S	143	286	705	1139	225	530	28	475	435	356	345	19
	QG*-Y225M	143	311	680	1114	225	530	28	475	435	356	345	19
	QG*-Y250M	161	349	784	1218	250	575	30	515	490	406	385	24
	QG*-Y280S	200	368	786	1220	280	640	35	580	550	457	410	24
	QG*-Y280M	200	419	927	1361	280	640	35	580	550	457	410	24
	QG*-Y 315S	222	406	1120	1554	315	865	45	645	640	508	576	28
	QG*-Y 315M	222	457	1170	1604	315	865	45	645	640	508	576	28
	QG*-Y 315L	222	508	1170	1604	315	865	45	645	640	508	576	28

JG系列变量轴向柱塞泵

Variable displacement pump JG

精工牌



示例：压力补偿变量轴向柱塞泵（Y）结构示意图 Example: pressure compensation control (Y) Pump construction

特点 Feature

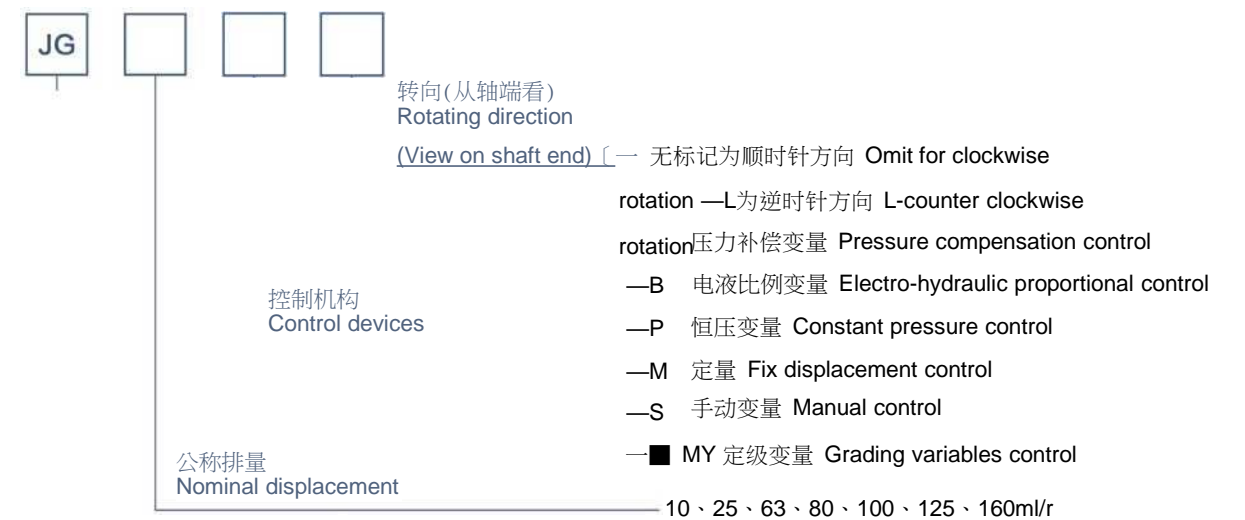
JG系列轴向柱塞泵（老式变量型）是我厂最新开发的CY型轴向泵更新换代产品，它包含原CY泵已有的变量型式，故称为老式变量型，除了具有原CY型轴向柱塞泵的优点外，还具有如下优点：

- 1、本产品是一种斜盘式轴向柱塞变量泵，专为开式回路液压驱动设计的；
- 2、额定工作压力可达31.5MPa,瞬时最高压力可达40MPa;
- 3、优良的吸入性能；
- 4、外观新颖、优良的功率/重量比；
- 5、噪声低、寿命长；
- 6、与SAE通用的油口法兰设计。

JG series axial piston pump (old type variable) was developed by our factory latest updated products CY type axial pump, it contains the original CY pump has some variable type, is called the old type variables, besides having the advantages of the original CY type axial plunger pump, also has the following advantages:

- 1、 This product is an axial piston pump in swash plate design for hydrostatic drives in open circuit operation;
- 2、 Its rated operating pressure is up to 31.5MPa, and the instantaneous high pressure can reach 40MPa;
- 3、 Excellent suction performance;
- 4、 New appearance Excellent power/Weight ratio;
- 5、 Low noise, Long lifespan;
- 6、 With the SAE general oil flange design

质型号说明 Ordering code



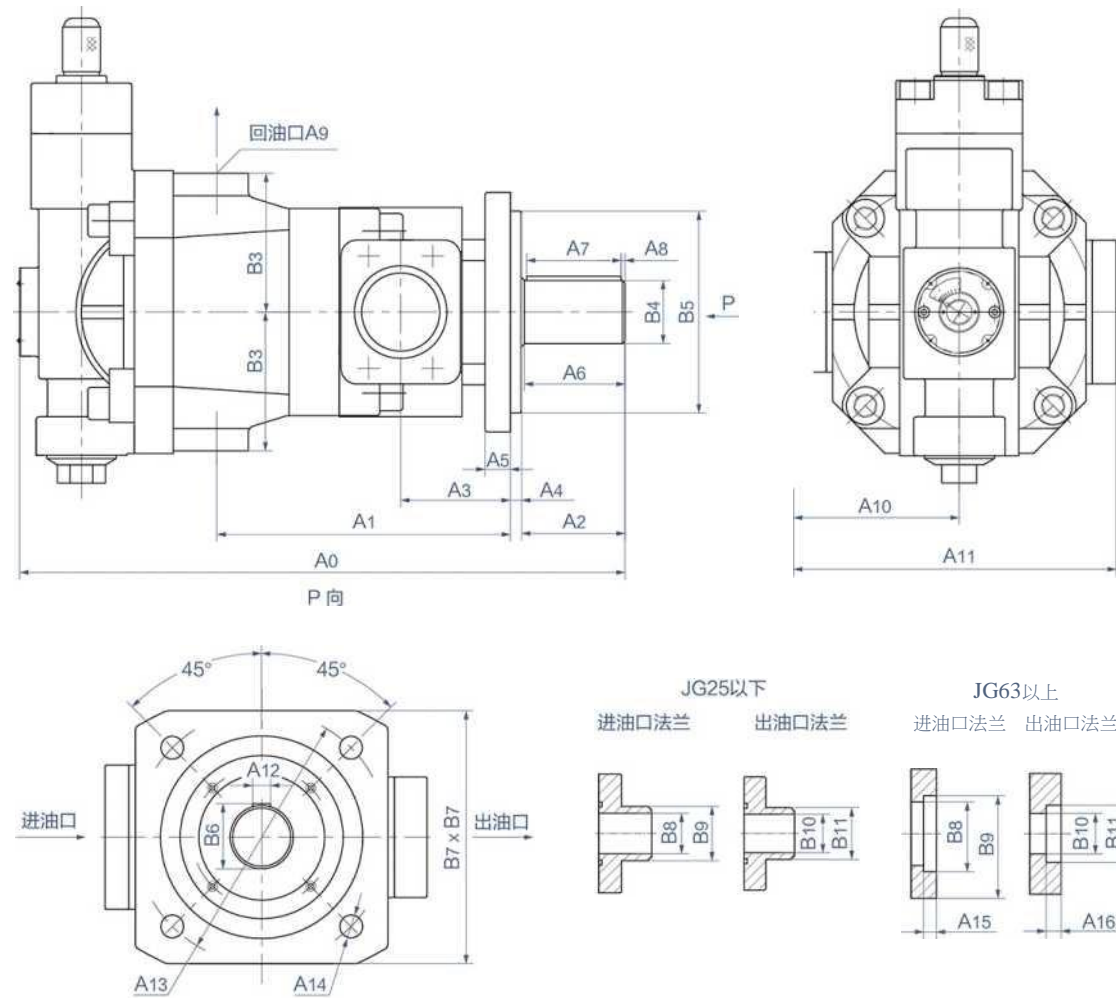
型号 Model

-----"精工"牌轴向柱塞泵"Seiko" brand axial plunger pump

in 参数表 (理论值) The Parameter List (theoretical values)

型号 Model	排量(ml/rev) displacement	额定压力(MPa) Rated power	自吸最高转速(r/min) Since the highest speed	WOOrpm最大功率(KW) Max.power
JG10	12.6	31.5	1500	6.5
JG25	23.9	31.5	1500	13.0
JG63	66.7	31.5	1500	34.3
JG80	85.18	31.5	1500	50.6
JG100	100	31.5	1500	59.4
JG125	126	31.5	1500	74.9
JG160	164.5	31.5	1500	97.7

IV 外形尺寸 Overall dimension



型号 Model	Ao	Al	A2	A3	A4	A5	A6	A7	A8	A9	A10	An	A12
JG10	255.5	60	38.5	25	15	10	37	30	4	M14x1.5	105	210	8
JG25	280	78	61	30	12		55	45			118	236	
JG63/80/100	427	201	72	81	9	20	70	65	3	M27x2	106	206	12
JG125/160	480.5	233	82	87			80	75			M33x2	126	246

型号 Model	A13	A14	A15	A16	B3	B4h6	B5f9	B6	B7	B8	B9	B10	B11
JG10	0100	011	10	12	60	025	<t>75	28	100	(P25	<P35	015	0 25
JG25	<P125				71	4) 30	4) 100	33	125	<P34	<P42	4) 20	0 28
JG63/80/100	0160	014	10	12	95	中40	4) 125	43	160	(P50	0 60	4) 32	4) 45
JG125/160	0200	018			110	<P50	0160	53.5	200	0 62	0 77	032	046

曲 推荐管道或管接头通径尺寸 Suggested dimensions of the pipe and pipe joint

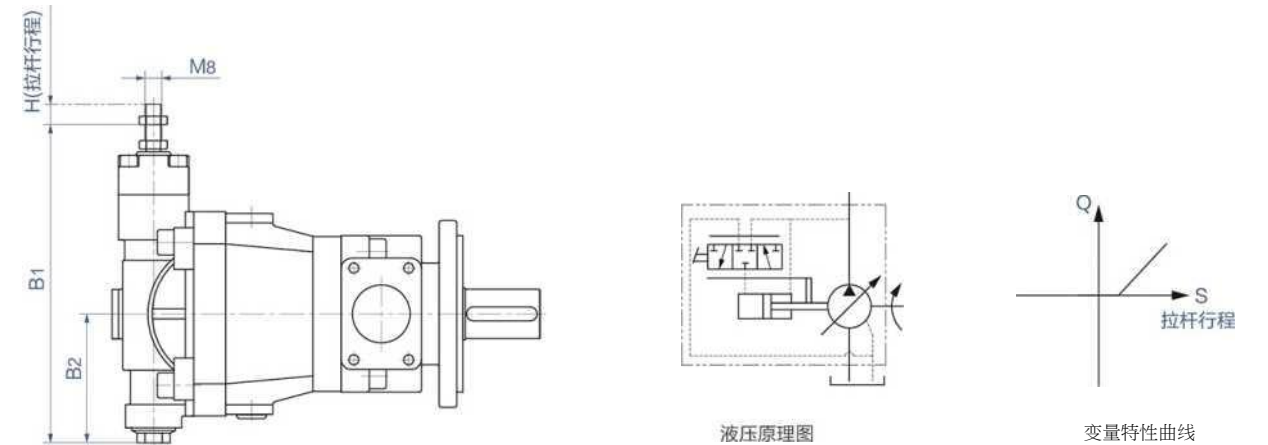
型号 Model	进油口 (mm) Inlet	出油口 (mm) Service Line	泄油口 (mm) Drain port
JG10/25	>625	^020	22
JG63/80/100	>0 50	^0 32	
JG125/160	界62	32	N6 25

VI 控制装置 Control devices

(1) JG**C 机动 (伺服) 变量泵 Mechanically (servo) operated

本变量机构的泵为机动伺服变量泵，适用于频繁变量（每一工作循环都需变量）的开式油路系统中，其操纵可以采用手动杠杆机构、凸轮 机构以及气缸液压缸等各种方式。

The variable pump for mechanically (servo) operated, suitable for frequent variables (need) variables each work cycle in the oil system of open, its manipulation can use manual lever mechanism, CAM mechanism and a variety of ways, such as cylinder hydraulic cylinder.

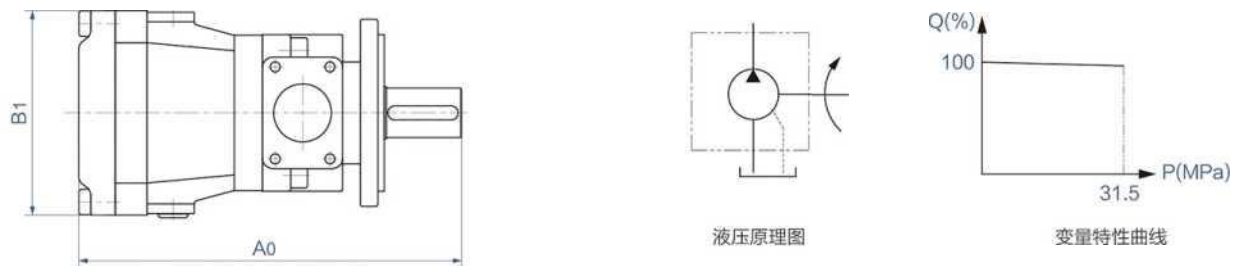


特性尺寸			

(2) JG**M - 定量 Fix displacement control

流量不可变化的泵。

The pump flow is can't be changed.

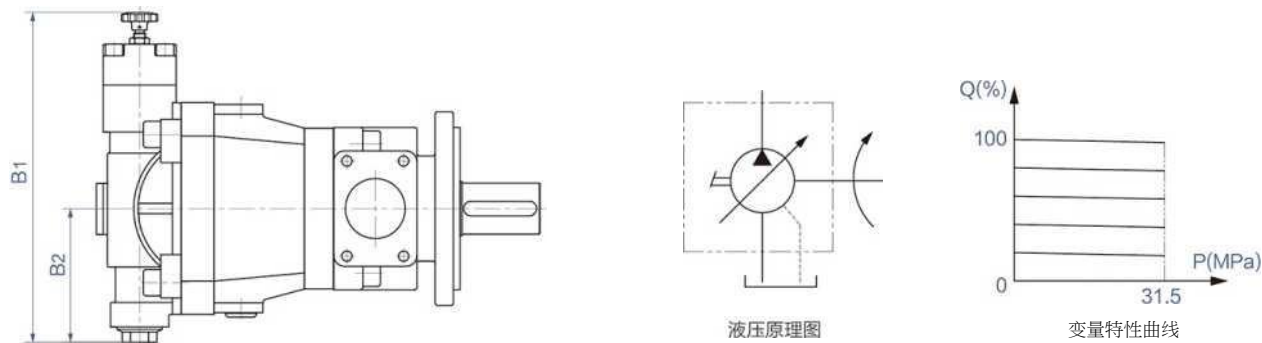


特性尺寸			
rnm			

(3) JG**S- 手动变量 Manual control

旋转手轮进行排量的无级调节，适用于不频繁变量，且不需要远距离操纵的情况下。

Stepless adjustment of displacement by turning the handwheel, apply to the infrequent variables and don't need a remote condition.

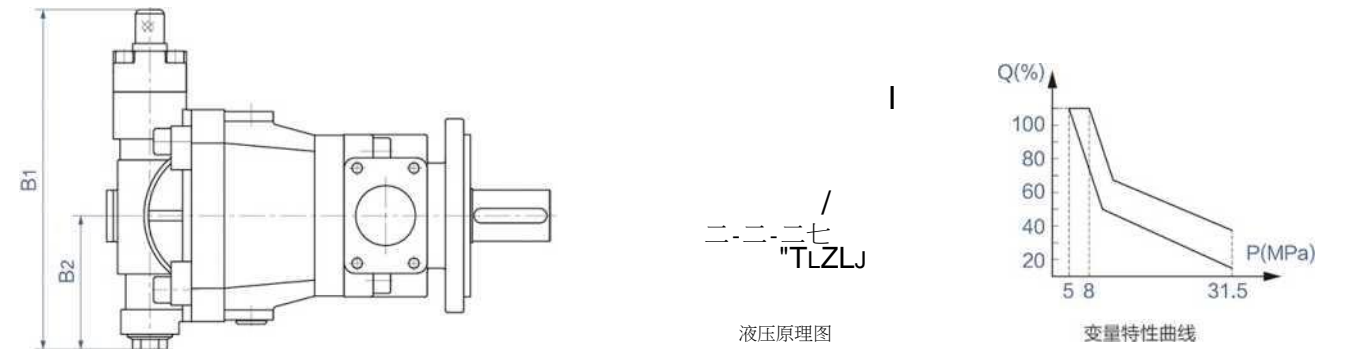


		JG63/80/100S	

(4) JG**Y- 压力补偿变量 Pressure compensation control

压力补偿变量泵的出口流量随出口压力的大小近似地在一定范围内按恒功率曲线变化。调节流量特性时，可先将限位螺钉拧至上所需的流量和压力变化范围，调节弹簧套，使其流量开始发生变化时的初始压力符合要求，然后将限位螺钉拧至最高压力时的流量不再发生变化，其中间的流量与压力变化关系由泵的本身设计所决定。

The outlet flow of Pressure compensation variable pump change with the size of the outlet pressure approximately in a certain range according to the constant power curve changes. Adjust flow characteristics, can put the limit screws to the top first and according to need pressure range, adjusting spring set, make its initial pressure meet the requirements when the flow changed and then limit screws to the highest pressure of the flow of change, of which no longer flow and pressure changes between the relationship of the pump design decision by itself.

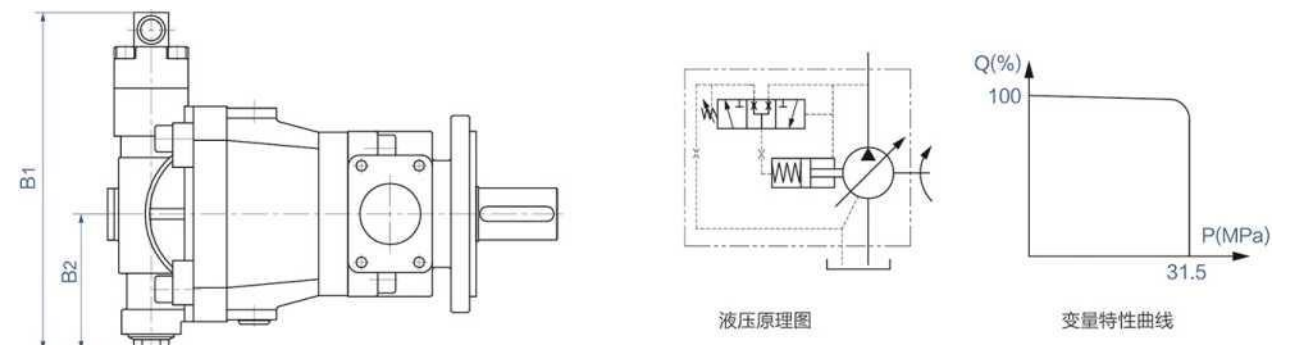


		JG63/80/100Y	JG125/160Y

(5) JG**P- 恒压变量 Constant pressure control

在泵的调节范围内，能使系统保持恒定的工作压力。当泵的控制压力通过泵上的恒压阀设定后，在系统达到设定的压力时，泵的排量迅速自动下调为仅是维持该恒定的系统压力所需的排量。系统的压力可通过恒压阀进行无级调节，且系统溢流阀仅作安全阀使用，其调定的压力应大于恒压阀设定压力的15~20%。

In the adjustment of the pump range, can make the system maintains a constant pressure of work. When the pump pressure under control though the constant pressure pump valve settings, in the system to achieve the set pressure, pump emissions displacement rapidly to only be able to maintain automatic cut the constant pressure of the system for emissions. The system pressure can through the constant pressure valve stepless adjustment, and the system relief valves are for the relief valve function, its adjustment of pressure should be greater than constant pressure valve set up the pressure of 15 - 20% .

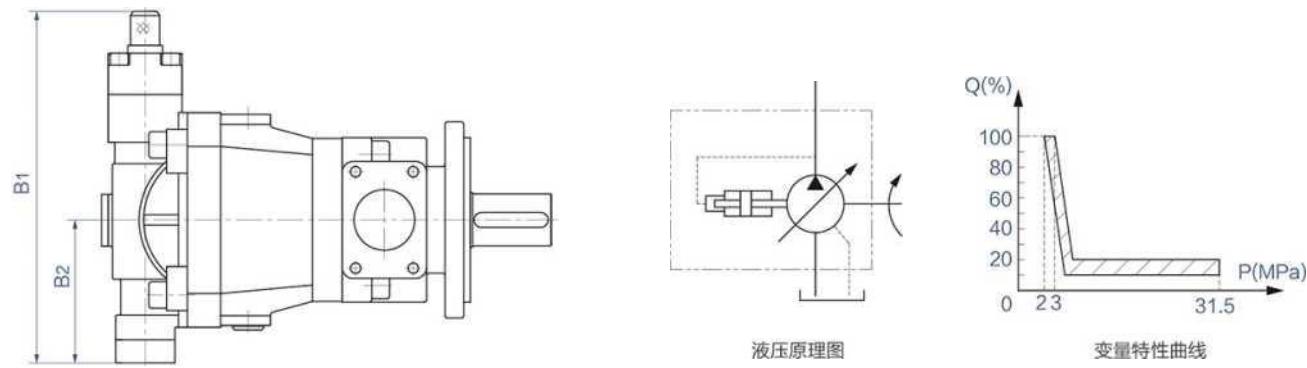


		JG63/80/100P	

(6)、JG**MY- 定级变量 Grading variables control

这种泵是依靠内控油压操纵变量机构。泵的压力调节范围比较小,油泵在3~4MPa时产生变量后,流量迅速减小至所要求的高压流量值。这种泵实际上相当于高低压组合泵,泵的驱动功率可参照压力补偿变量泵的功率选择方法进行计算。

This pump is rely on internal control hydraulic control variable instiutions.The pump pressure adjustment range are small,hydraulic in 3 ~ 4MPa generated when the variables, flow diminishes quickly to the requirements of high pressure flow value. This pump is equivalent to the combination of high and low voltage actually pump, pump drive power choose reference may be made to the pressure compensation variable pump power selection method to calculate.

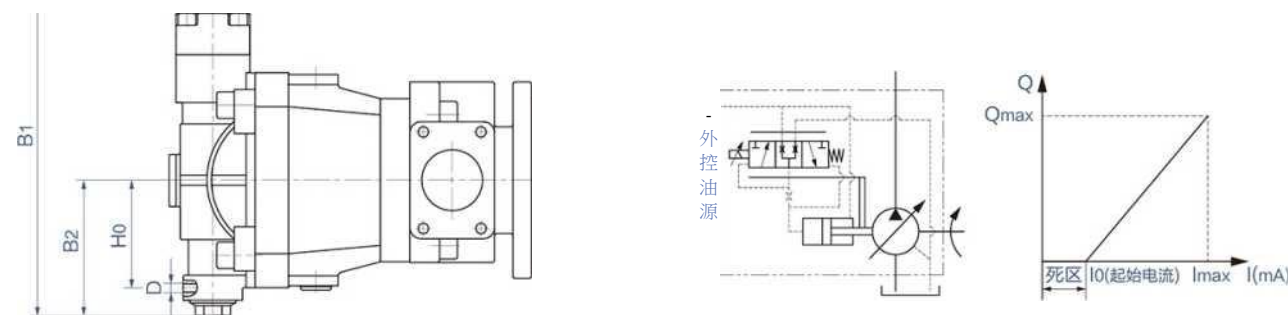


			JG125/160MY

(7)、JG**B- 电液比例变量 Electro-hydraulic proportional control

这种泵采用外控油压来控制变量机构,利用改变输入比例电磁铁的电流大小来改变泵的流量,输入电流与泵的流量成正比例的关系。起始 电流一般为100~150mA,最大控制电流一般为650~800mA。

This pump is rely on external control hydraulic control variable instiutions, input proportional electromagnet by changing the size of the current to change the pump flow, input current is proportional relationship to the pump flow. The starting current general is 100 ~ 150 mA, the biggest control current general is 650 ~ 800 mA .



外控油压力,排量125ml/r以上的泵为10~15MPa,排量100ml/r以下的的泵为6~10MPa,使用的工作压力低,外控油压力也可相应降低。推荐外控泵的流量为Q控q(t/l/min), q见下表。

For the oil pressure, the pump displacement more than 125ml/r is 10 ~ 15MPa, the pump displacement blew than 100ml/r is 6 ~ 10MPa. Using low working pressure, the oil pressure can be reduced. The control pump flow is recommended for Q 控 q(t/l/min), q see the table below.

型号/规格	JG10-25	JG63-100	JG125-160
q (L/min)	55	66	83

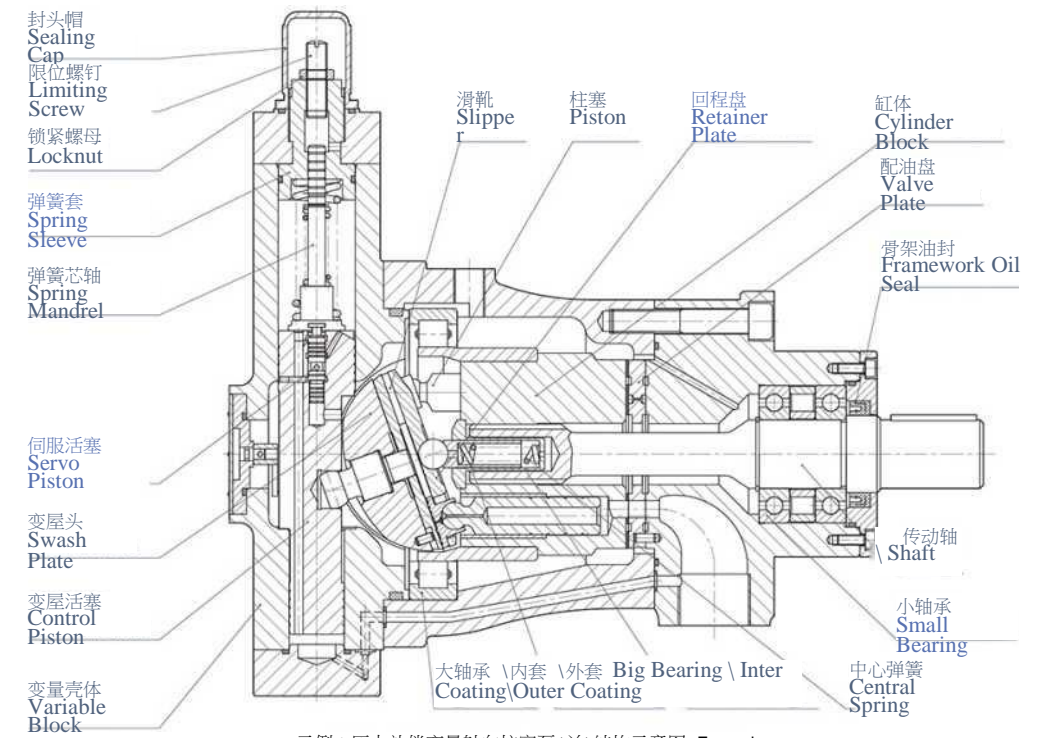
CY14-1B系列变量轴向柱塞泵

Variable displacement pump CY14-1B

精工部



S 结构图 Construction



示例：压力补偿变量轴向柱塞泵(Y)结构示意图 Example: pressure compensation control (Y) Pump construction

型号说明 Ordering code



┌— 无标记为顺时针方向 Omit for clockwise rotation

└— F为逆时针方向 F-counter clockwise rotation

-----图纸改进的代号 A.B.C.K.....code for modified design -----

第一种结构代号 Code for 1st design

-----缸体旋转式轴向柱塞泵(马达) Axial piston pump (motor) with rotating cylinder CY

泵 Pump

M 马达 Motor

— 额定压力 Rated pressure C-31.5MPa

— B 电液比例变量 Electro-hydraulic proportional control

— MY 定级变量 Grading variables control

— Z 液动变量 Hydraulic variable control

— L 零位对中液动变量 Null position centered with pilot control

— P 恒压变量 Constant pressure control

— M 定量 Fix displacement control

— S 手动变量 Manual control

— D 电动变量 Electrically control

— Y 压力补偿变量 Pressure compensated control

— C 机动(伺服)变量 Pressure compensation control

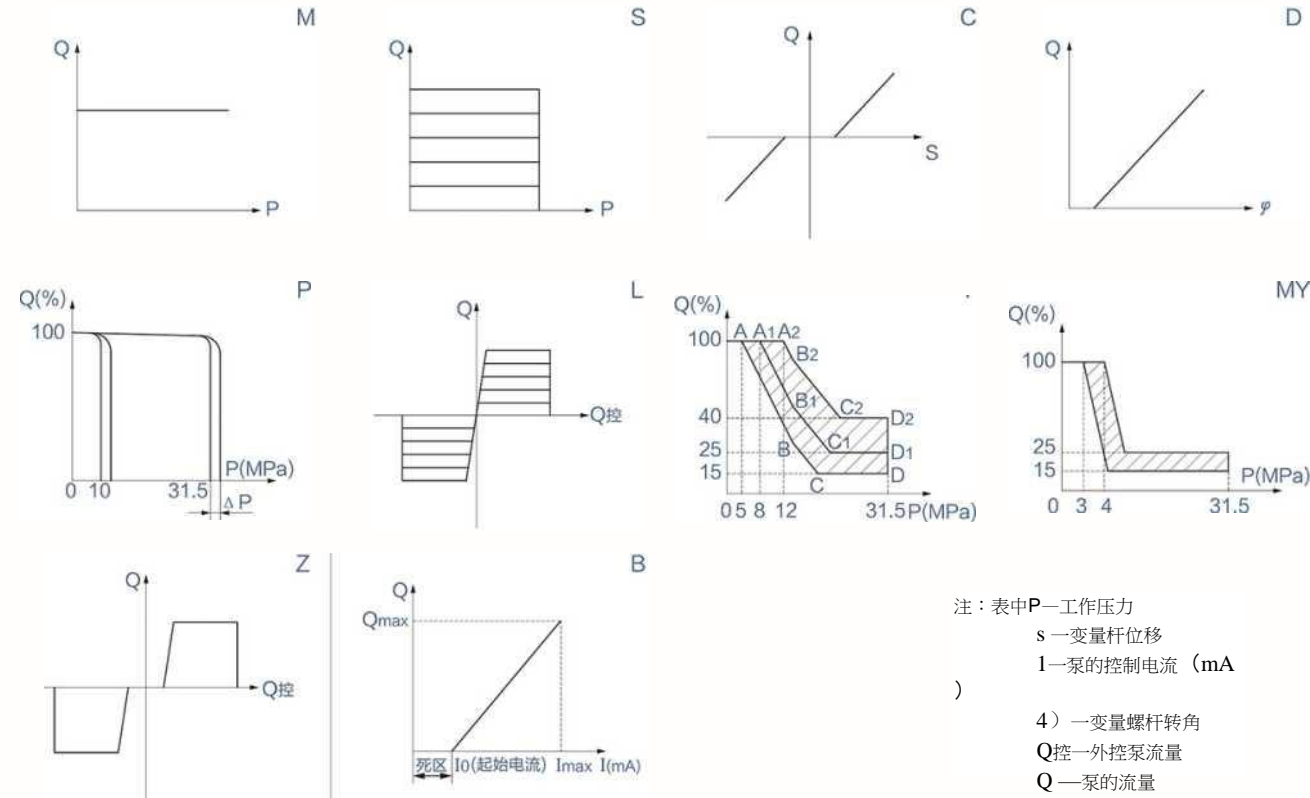
公称排量(毫升/转) Nominal displacement (ml/rev)

参数表(理论值) The Parameter List (theoretical values)

型号 Model	连续工作压力 (MPa) Continuous working pressure	公称排量 (ml/rev) Nominal displacement	CY14-1B(CM14-1B)轴向柱塞泵(马达)的技术参数 Technical data of CY14-1 B(CM14-1 B)Axial piston pump										ZCY 14-1B	MYCY 14-1B	BCY 14-1B	
			额定转速 (r/min)	额定功率 (KW)	重量 (kg)	I 变量泵式 Displacement control type										
			14-1B	14-1B	14-1B	14-1B	14-1B	14-1B	14-1B	14-1B						
2.5*CY(M) 14-1B	31.5	2.5	3000	4.4	7.2					V ☆	V...					
5*CY(M) 14-1B		5	1500	4.4	8.2					V ☆	V ☆					
10*CY(M) 14-1B		10	1500	8.7	19	0 ☆	V ☆	V ☆	V ☆	V ☆	V ☆		0	V ☆	V ☆	
16*CY(M) 14-1B		16	1500	14	35	0 ☆	7☆	V ☆	V ☆	V ☆	V ☆	7在	0 ☆	V ☆	V ☆	
25*CY(M) 14-1B		25	1500	21.8	35	0 ☆	V ☆	V ☆	V ☆	V ☆	V ☆		0	V ☆	V ☆	
32*CY(M) 14-1B		32	1500	28	35	0 ☆	7在	7表	V ☆	7☆	V		0 ☆	7☆	V ☆	
40*CY(M) 14-1B		40	1500	35	35	0 ☆	V ☆	V ☆	V ☆	V ☆	V --	V ☆	0	V ☆	V ☆	
63*CY(M) 14-1B		63	1500	55	63	0 ☆	7在	V ☆	V ☆	V ☆	7在		0 ☆	V ☆	V ☆	
80*CY(M) 14-1B		80	1500	70	63	0 ☆	V ☆	V ☆	V ☆	V ☆	V ☆		0	V ☆	V ☆	
108*CY(M) 14-1B		108	1500	94.5	73	0 ☆	7在	V ☆	V ☆	V ☆	7☆		0 ☆	V ☆	V ☆	
160*CY(M) 14-1B		160	1000、1500	93、139	128	0 ☆	V ☆	V ☆	V ☆	V ☆	V ☆	0 ☆	0	V ☆	V ☆	
250*CY(M) 14-1B		250	1000、1500	145、218	227	0 ☆	V ☆	V ☆	V ☆	V ☆	V ☆	0 ☆	0		V ☆	
400*CY(M) 14-1B		400	1000	232	235	0 ☆	V ☆	V ☆	V ☆	V ☆	V ☆	0 ☆	0		V ☆	

备注：有“o”者表示油流可以换向，有“V”者表示油流不可换向，有“☆”者表示我厂可供产品。 Note: “o” Signifies double discharge, “V” Signifies single discharge, “☆” Signifies Product availability.

f 控制装置 Control device



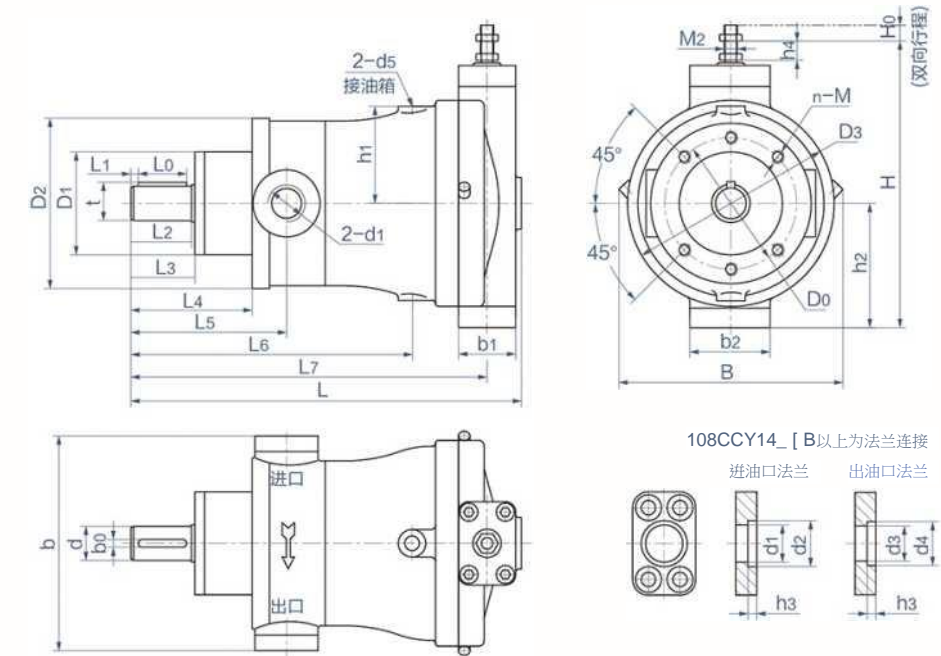
VI 推荐管道或管接头通径尺寸 (不可逆用) Recommending Pipe Sizes (Using Oppositely unallowed)

型号 Model	进口(外径X壁厚) Inlet (Outer diameterxthickness)	出口(外径X壁厚) outlet (Outer diameterxthickness)	泄油口(外径X壁厚) Drain Fluid (Outer diameterxthickness)
2.5CY14-1B	4)18x2	\$14x2	<P8x1
5CY14-1B	E8x2	4>18x2.5	E0x 1
10CY14-1B	025x2	4>18x2.5	E0x 1
16CY14-1B	030x3	022x3	4) 10x1
25CY14-1B	<P34x3	\$28x4	E0x 1
32CY14-1B	4>38x3	\$28x4	◎ 12x1
40CY14-1B	042x3	<l) 28x4	E2xi
63CY14-1B	0 50x3.5	4>42x4	0 14 X 1
80CY14-1B	4) 54 x 3.5	042x4	<t> 14x 1
108CY14-1B	60x3.5	048x5	E8x1.5
160CY14-1B	063x4	\$50x5	E8x1.5
250CY14-1B	4>89x4	◎ 76x7	4) 24x2
400CY14-1B	0 89x4	\$76x7	024x2

推荐使用JB/T984-1977焊接式端直通管接头体
Recommend using JB/T984-1977 welded end through
the pipe body

vn 外形尺寸 Overall dimension

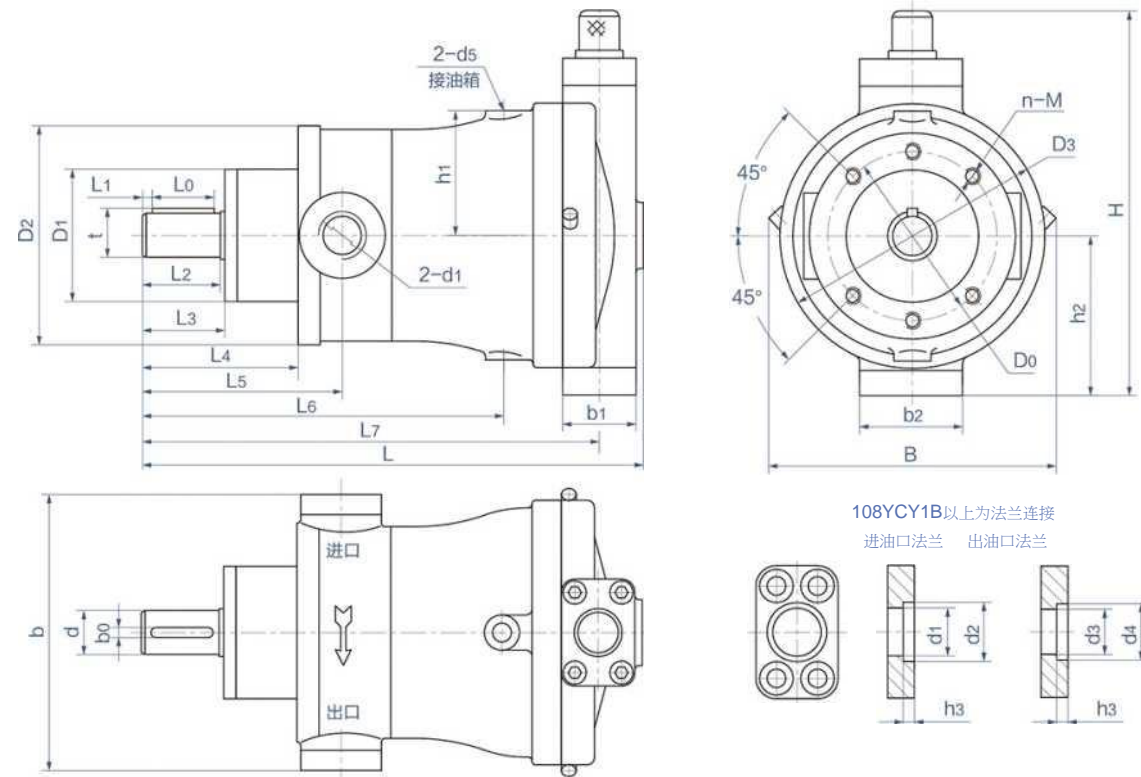
CCY14-1B轴向柱塞泵外形尺寸
Overall dimension of Axial Piston Pump Type CCY14-1B



型号 尺寸	10(16)CCY	25CCY	(32)40CCY	63(80)CCY	108CCY	160CCY	250CCY	400CCY
B	172	195	195	258	258	322	385	385
b	142	172	178	200	270	330	420	420
bo(h9)	8	8	8	12	12	16	18	18
bi	50	66	66	74	74	100	100	100
b2	88	100	100	104	104	120	140	140
Do	100	4>125	<t>125	(1) 155	0155	<1)198	4>230	<P230
Di(f9)	4>75	0100	0100	4>120	4)120	<P150	中180	4>180
D2	0125	0150	<l>150	4>190	<t>190	<t>240	4) 280	4>280
D3	0150	4)170	so	<t>225	0225	0300	4>360	4>360
d(h6)	4>25	0 30	4) 30	(J> 40	<t>40	4>55	<P60	0 60
d2 (d4)					4>60	4>64	4) 76	<l>76
di(d3)	M22x1.5	M33x2	M42x2	M42(M48) x 2	<P50	4>55	4) 65	<t>65
d5	M14x1.5	M14x1.5	M14x1.5	M18x1.5	M22x1.5	M22x1.5	M27x2	M27x2
H	243	296	296	337	337	391	458	458
Ho	22	34.6	34.6	41.4	41.4	42.8	55.6	55.6
hi	71	83	83	108	108	141	170	170
h2	100	125	125	139	139	172	210	210
h3					15	20	25	25
h4	22	22	22	22	22	22	22	22
L	295	362	362	440	450	595	691	701
LO	30	45	45	50	50	100	100	100
L1	4	4	4	4	4	4	5	5
L2	40	52	52	60	60	106	110	110
L3	41	54	54	62	62	110	112	112
L4	86	104	104	122	122	180	212	212
L5	109	134	134	157	162	230	272	277
L6	194	237	237	300	310	411	492	502
L7	258	317	317	389	399	533	629	639
M	4-M10x25	4-M10x25	4 - M1 0x 25	4-M12x25	4-M12x25	6-M16x35	6-M20x45	6 - M20x45
t	28	33	33	42.8	42.8	59	63.9	63.9

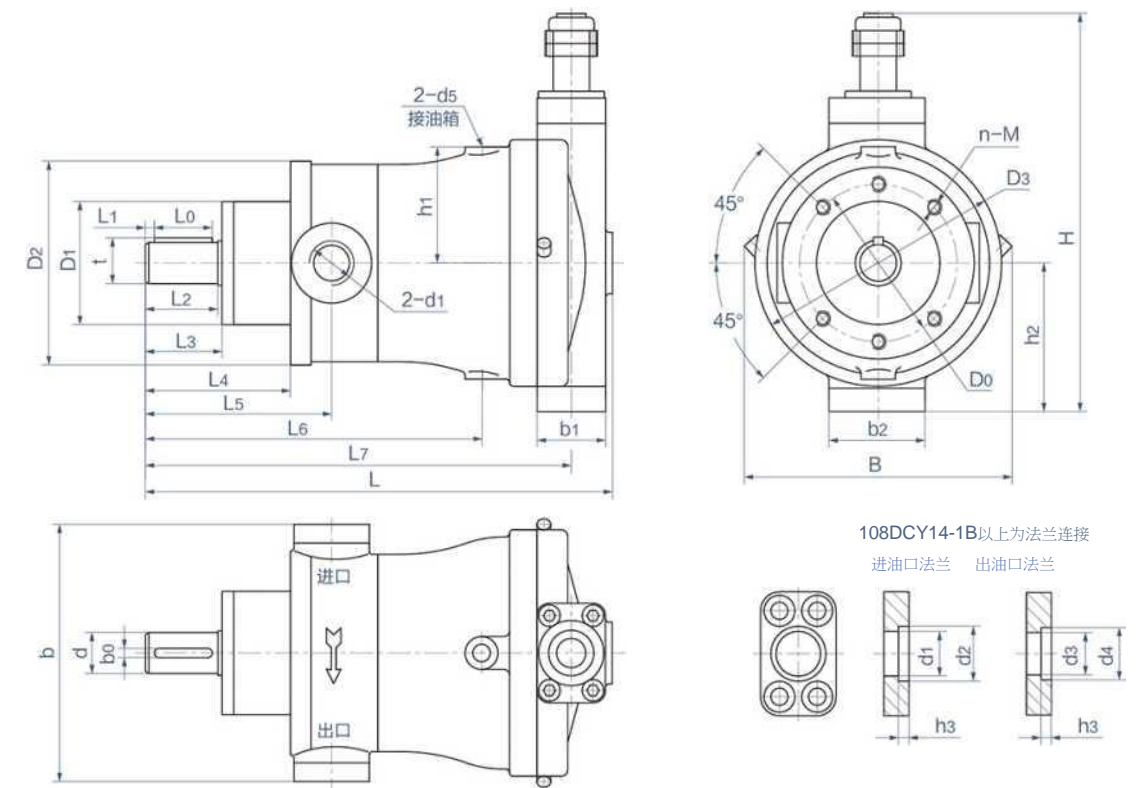
YCY14-1B轴向柱塞泵

Overall dimension of Axial Piston Pump Type YCY14-1B



DCY14-1B轴向柱塞泵

Overall dimension of Axial Piston Pump Type DCY14-1B

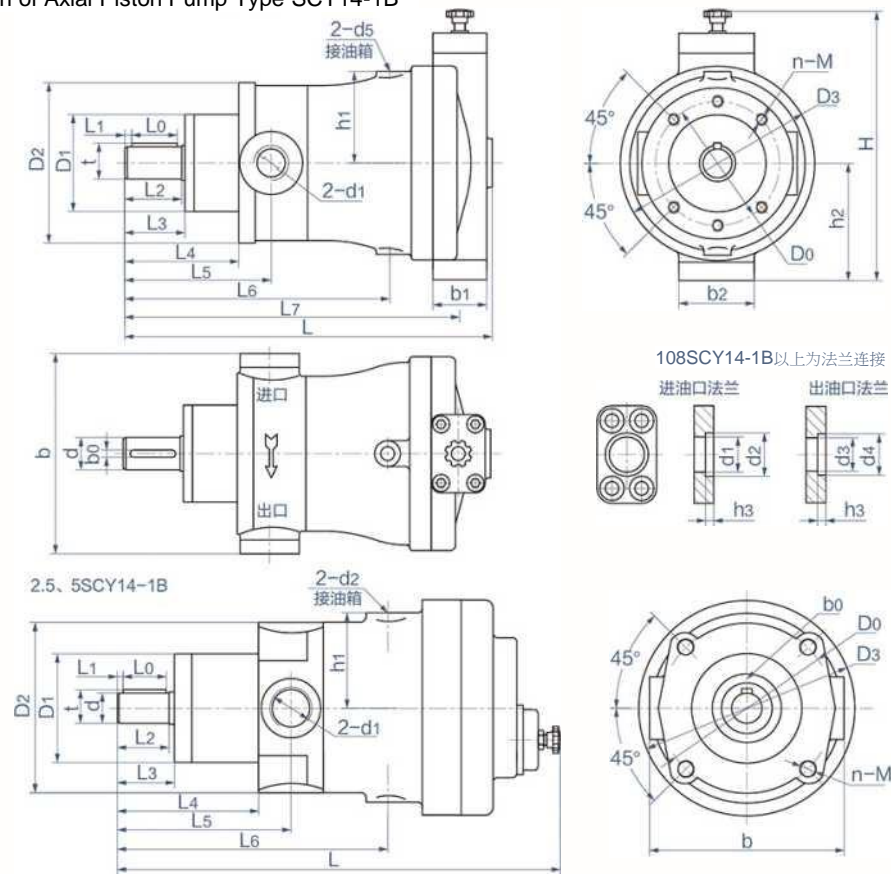


尺寸	型号	10(16)YCY	25YCY	(32)40YCY	63(80)YCY	108YCY	160YCY	250YCY	400YCY
B		172	195	195	258	258	322	385	385
b		142	172	178	200	270	330	420	420
bo(h9)		8	8	8	12	12	16	18	18
bi		50	66	66	74	74	100	100	100
b2		88	100	100	104	104	120	140	140
Do		<t>100	0125	<M25	<1>155	4>155	<t>198	0 230	<t>230
Di(f9)		4>75	\$100	0100	0120	4>120	<P150	<t>180	4>180
D2		4) 125	4>150	<1>150	0190	4>190	4)240	4)280	<t>280
D3		4>150	0170	<P170	<t>225	4)225	0 300	0 360	6 360
d(h6)		<P25	0 30	0 30	4) 40	4) 40	<t>55	<t>60	<t>60
d2 (d4)						4>60	4) 64	081(·76)	4) 76
di(d3)		M22x1.5	M33x2	M42x2	M42(M48) x 2	中50	<t>55	<1) 75(e 65)	<t>65
d5		M14x1.5	M14x1.5	M14x1.5	M18x1.5	M22x1.5	M22 x 1.5	M27x2	M27x2
H		288	351	351	400	400	448	516	516
hi		71	83	83	108	108	141	170	170
h2		100	120	120	140	140	173	210	210
h3					15	15	20	25	25
L		295	364	364	440	450	595	691	701
Lo		30	45	45	50	50	100	100	100
L1		4	4	4	4	4	4	5	5
L2		40	52	52	60	60	106	110	110
L3		41	54	54	62	62	110	112	112
L4		86	104	104	122	122	180	212	212
L5		109	134	134	157	162	230	272	277
L6		194	237	237	300	310	411	492	502
L7		258	317	317	389	399	533	629	639
M		4-M10x25	4 - M10x 25	4-M10x25	4-M12x25	4-M12x25	6-M16x35	6-M20x45	6-M20x45
t		28	33	33	42.8	42.8	59	63.9	63.9

尺寸	型号	10(16)DCY	25DCY	(32)40DCY	63(80)DCY	108DCY	160DCY	250DCY	400DCY
B		172	195	195	258	258	322	385	385
b		142	172	178	200	270	330	420	420
bo(h9)		8	8	8	12	12	16	18	18
bi		50	66	66	74	74	100	100	100
b2		88	100	100	104	104	120	140	140
Do		0100	4>125	<t>125	4>155	0155	<M98	4) 230	4>230
Di(f9)		4) 75	0100	0100	4>120	4>120	<P150	4>180	4>180
D2		0125	<M50	<1>150	<t> 190	0190	<1>240	<t>280	4>280
D3		0150	0170	<M70	<P225	<t>225	0 300	<1>360	4>360
d(h6)		025	0 30	4) 30	4) 40	4) 40	4>55	<t>60	4) 60
d2 (d4)						4>60	0 64	76)	4>76
di(d3)		M22x1.5	M33x2	M42x2	M42(M48) x 2	<t>50	4>55	中 75(·65)	<t>65
d5		M14x1.5	M14x1.5	M14x1.5	M18x1.5	M22 x 1.5	M22x1.5	M27x2	M27x2
H		369	420	420	480	480	535	613	613
hi		71	83	83	108	108	141	170	170
h2		100	125	125	139	139	172	210	210
h3					15	15	20	25	25
L		295	362	362	440	450	595	691	701
Lo		30	45	45	50	50	100	100	100
L1		4	4	4	4	4	4	5	5
L2		40	52	52	60	60	106	110	110
L3		41	54	54	62	62	110	112	112
L4		86	104	104	122	122	180	212	212
L5		109	134	134	157	162	230	272	277
L6		194	237	237	300	310	411	492	502
L7		258	317	317	389	399	533	629	639
M		4-M10x25	4-M10x25	4 - M10x 25	4-M12x25	4-M12x25	6-M16x35	6-M20x45	6 - M20x45
t		28	33	33	42.8	42.8	59	63.9	63.9

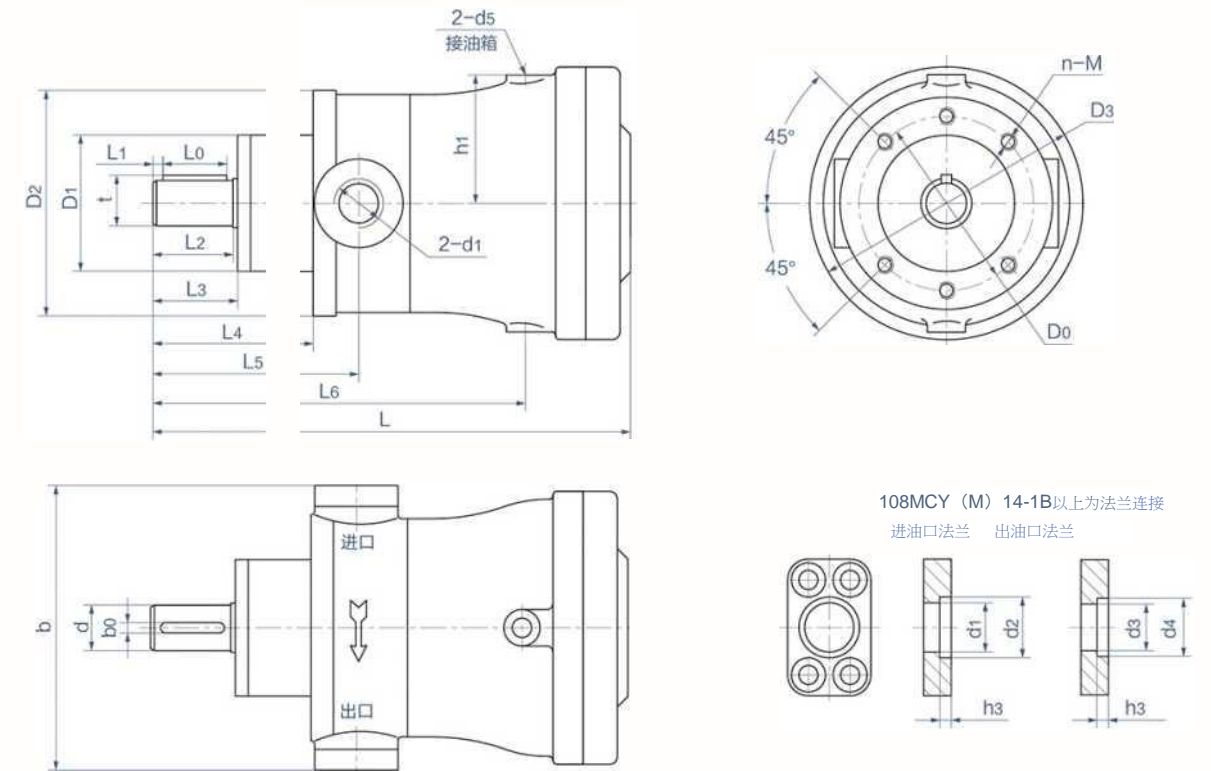
SCY14-1B轴向柱塞泵

Overall dimension of Axial Piston Pump Type SCY14-1B



MCY (M) 14-1B轴向柱塞泵

Overall dimension of Axial Piston Pump Type MCY (M) 14-1B

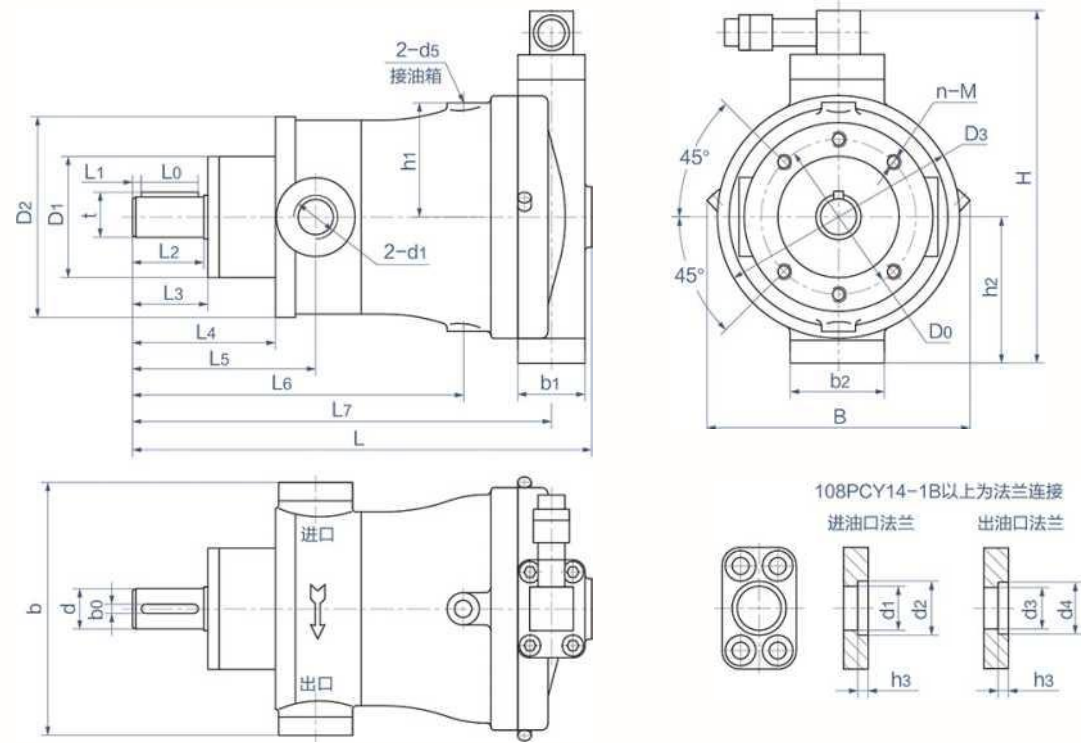


型号	2.5SCY	5SCY	10(16)SCY	25SCY	(32)40SCY	63(80)SCY	108SCY	160SCY	250SCY	400SCY
b	84	98	142	172	178	200	270	330	420	420
bo(h9)	5	6	8	8	8	12	12	16	18	18
bi			50	66	66	74	74	100	100	100
b2			88	100	100	104	104	120	140	140
Do	4>80	<<90	<M00	<P125	4>125	<P155	<<155	4>198	<<230	0 230
Di(f9)	<<52	<P60	4) 75	4>100	0100	4>120	4>120	4)150	4>180	0180
D2	4>79	<<96	4>125	<P150	4)150	4)190	4>190	4)240	<<280	0280
D3	\$100	0102	4>150	0170	E70	\$225	4>225	<P300	0 360	0 360
d(h6)	4>14	0 20	<<25	4) 30	0 30	<<40	4>40	<<55	4>60	<<60
d2 (d4)							0 60	<<64	4)81(4)76	<<76
di(d3)	M18x1.5	M22x1.5	M22x1.5	M33x2	M42x2	M42(M48)x2	<<50	<<55	中75(中65)	4>65
d5	M10x1	M14x1.5	M14x1.5	M14x1.5	M14x1.5	M18x1.5	M22x1.5	M22x1.5	M27x2	M27x2
H			231	266	266	305	305	393	470	470
hi	44	50	71	83	83	108	108	141	170	170
h2			91	101	101	130	130	165	203	203
h3							15	20	25	25
L	212.5	248	295	362	362	440	450	595	691	701
Lo	20	28	30	45	45	50	50	100	100	100
L1	3	3	4	4	4	4	4	4	5	5
L2	25	31.5	40	52	52	60	60	106	110	110
L3	26	34.5	41	54	54	62	62	110	112	112
L4	62	73	86	104	104	122	122	180	212	212
L5	77	90.5	109	134	134	157	162	230	272	277
L6	119	144	194	237	237	300	310	411	492	502
L7			258	317	317	389	399	533	629	639
M	4-M8x12	4-M8x20	4-M10x25	4-M10x25	4-M10x25	4-M12x25	4-M12x25	6-M16x35	6-M20x45	6-M20x45
t	16	22.5	28	33	33	42.8	42.8	59	63.9	63.9

尺寸	2.5MCY 2.5MCM	5MCY 5MCM	10(16)MCY 10(16)MCM	25MCY 25MCM	(32)40MCY (32)40MCM	63(80)MCY 63(80)MCM	108MCY 108MCM	160MCY 160MCM	250MCY 250MCM	400MCY 400MCM
b	84	98	142	172	178	200	270	330	420	420
bo(h9)	5	6	8	8	8	12	12	16	18	18
Do	4) 80	4) 90	<J>100	4>125	4>125	4>155	4>155	4>198	0 230	<P230
Di(f9)	4>52	<P60	4>75	0100	<I>100	<P120	4)120	<I>150	<I>180	<<180
D2	4) 79	<P96	4) 125	4>150	<M50	4>190	<M90	4) 240	0280	<<280
D3	<I>100	<P102	0150	4>170	0170	<<225	4)225	<<300	4>360	<P360
d(h6)	4>14	<P20	4>25	<<30	4>30	<P40	040	4>55	<<60	0 60
d2 (d4)							4>60	<P64	4>81(0 76)	0 76
di(d3)	M18x1.5	M22x1.5	M22x1.5	M33x2	M42x2	M42(M48)x2	4>50	<P55	中75(中65)	0 65
d5	M10x1	M14x1.5	M14x1.5	M14x1.5	M14x1.5	M18x1.5	M22x1.5	M22x1.5	M27x2	M27x2
hi	44	50	71	83	83	108	108	141	170	170
h3							15	20	25	25
L	173	199	253	308	308	385	395	525	622	632
Lo	20	28	30	45	45	50	50	100	100	100
L1	3	3	4	4	4	4	4	4	5	5
L2	25	31.5	40	52	52	60	60	106	110	110
L3	26	34.5	41	54	54	62	62	110	112	112
L4	62	73	86	104	104	122	122	180	212	212
L5	77	90.5	109	134	134	157	162	230	272	277
L6	119	144	194	237	237	300	310	411	492	502
M	4-M8x12	4-M8x20	4-M10x25	4-M10x25	4-M10x25	4-M12x25	4-M12x25	6-M16x35	6-M20x45	6-M20x45
t	16	22.5	28	33	33	42.8	42.8	59	63.9	63.9

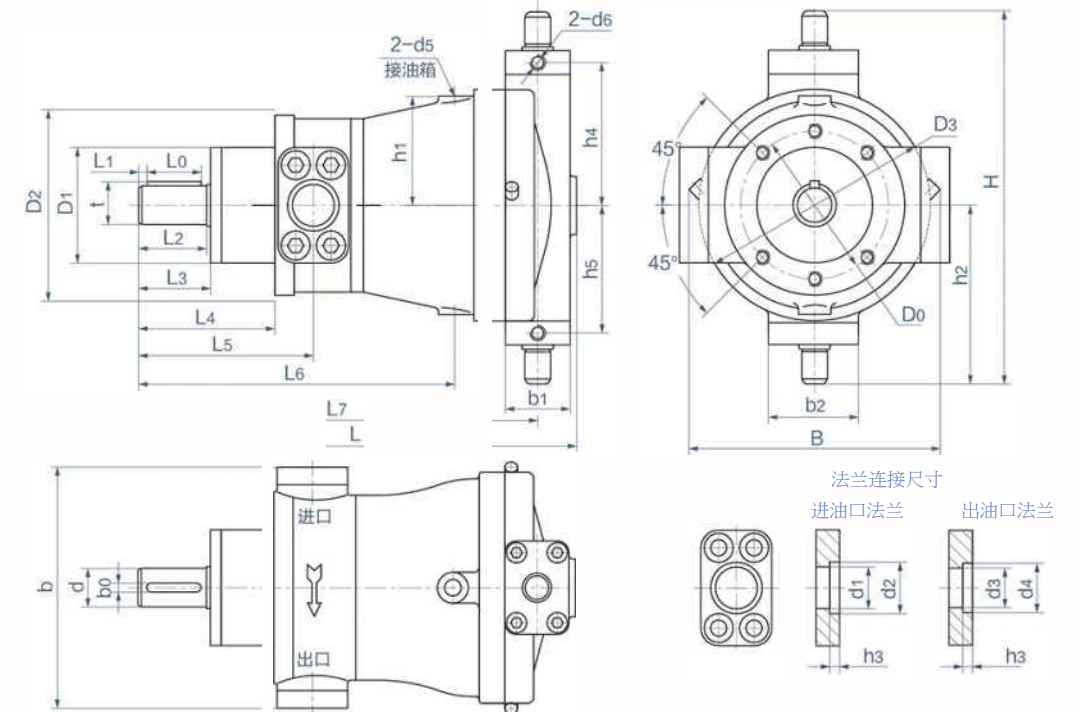
PCY14-1B轴向柱塞泵

Overall dimension of Axial Piston Pump Type PCY14-1B



LCY14-1B轴向柱塞泵

Overall dimension of Axial Piston Pump Type LCY14-1B

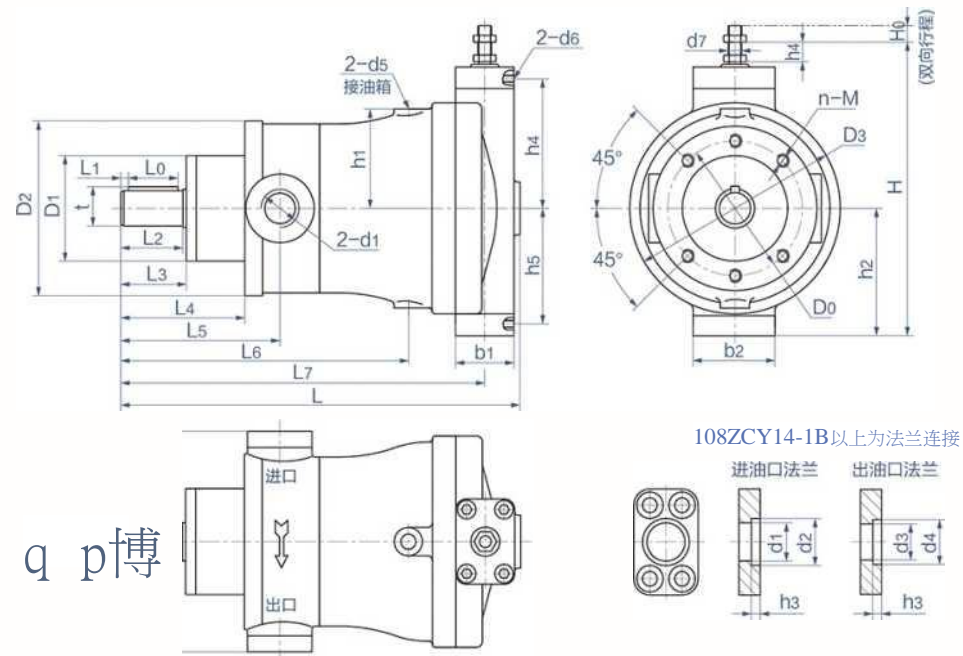


尺寸	10(16)PCY	25PCY	(32)40PCY	63(80)PCY	108PCY	160PCY	250PCY	400PCY
B	172	195	195	258	258	322	385	385
b	142	172	178	200	270	330	420	420
bo(h9)	8	8	8	12	12	16	18	18
bi	50	66	66	74	74	100	100	100
b2	88	100	100	104	104	120	140	140
b3	187	187	187	138	138	138	138	138
Do	4>100	0125	<M25	<t>155	4)155	4>198	<t>230	<t>230
Di(f9)	<j>75	\$100	0100	0120	4>120	<P150	<l>180	4>180
D2	4)125	0150	<l>150	4>190	E90	0 240	4)280	4)280
D3	4>150	0170	\$170	<l>225	<t>225	<t>300	4)360	0360
d(h6)	<t>25	<t>30	0 30	4)40	4>40	<t>55	<t>60	<t>60
d2 (d4)					4>60	<P64	081(.76)	φ76
di(d3)	M22x1.5	M33x2	M42x2	M42(M48)x2	<t> 50	φ55	0 75(0 65)	<t>65
d5	M14x1.5	M14x1.5	M14x1.5	M18x1.5	M22x1.5	M22 , 1.5	M27x2	M27x2
H	286	271	271	329	329	396	465	465
hi	71	83	83	108	108	141	170	170
h2	100	120	120	140	140	173	210	210
h3					15	20	25	25
L	295	364	364	440	450	595	691	701
Lo	30	45	45	50	50	100	100	100
L1	4	4	4	4	4	4	5	5
L2	40	52	52	60	60	106	110	110
L3	41	54	54	62	62	110	112	112
L4	86	104	104	122	122	180	212	212
L5	109	134	134	157	162	230	272	277
L6	194	237	237	300	310	411	492	502
L7	258	317	317	389	399	533	629	639
M	4-M10x25	4-M10x25	4-M10x25	4-M12x25	4-M12x25	6-M16x35	6-M20x45	6-M20x45
t	28	33	33	42.8	42.8	59	63.9	63.9

尺寸型号	160LCY	250LCY	400LCY
B	322	385	385
b	330	420	420
bo(h9)	16	18	18
bi	100	100	100
b2	120	140	140
Do	0198	0 230	<t>230
Di(f9)	4>150	<l>180	\$180
D2	4)240	4>280	4)280
D3	0 300	0 360	<t>360
d(h6)	4) 55	4) 60	4) 60
d2 (d4)	<l>64	0 81(4) 76)	4>76
di(d3)	4) 55	<t> 75(4) 65)	<t>65
d5	M22x1.5	M27x2	M27x2
d6	M18x1.5	M18x1.5	M18x1.5
H	520	600	600
hi	141	170	170
h2	243	280	280
h3	20	25	25
h4	194	228	228
h5	160	188	188
L	595	691	701
Lo	100	100	100
L1	4	5	5
L2	106	110	110
L3	110	112	112
L4	180	212	212
L5	230	272	277
L6	411	492	502
L7	533	629	639
M	6-M16x35	6-M20x45	6-M20x45
t	59	63.9	63.9

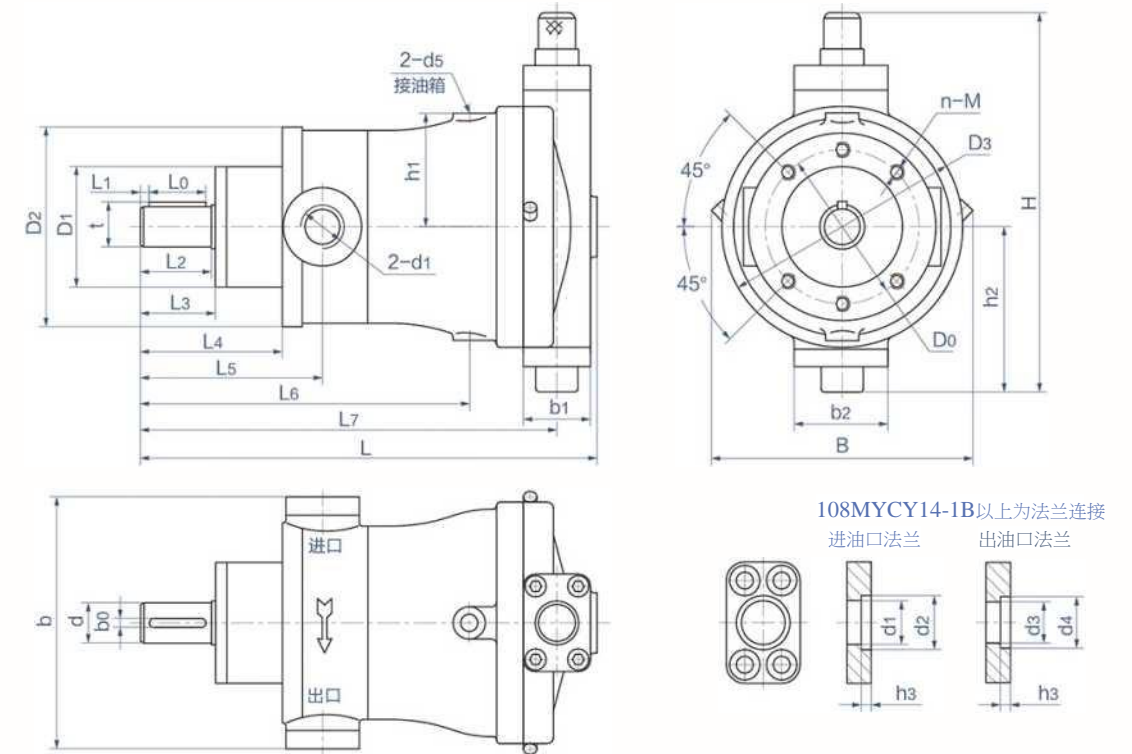
ZCY14-1B轴向柱塞泵

Overall dimension of Axial Piston Pump Type ZCY14-1B



MYCY14-1B轴向柱塞泵

Overall dimension of Axial Piston Pump Type MYCY14-1B

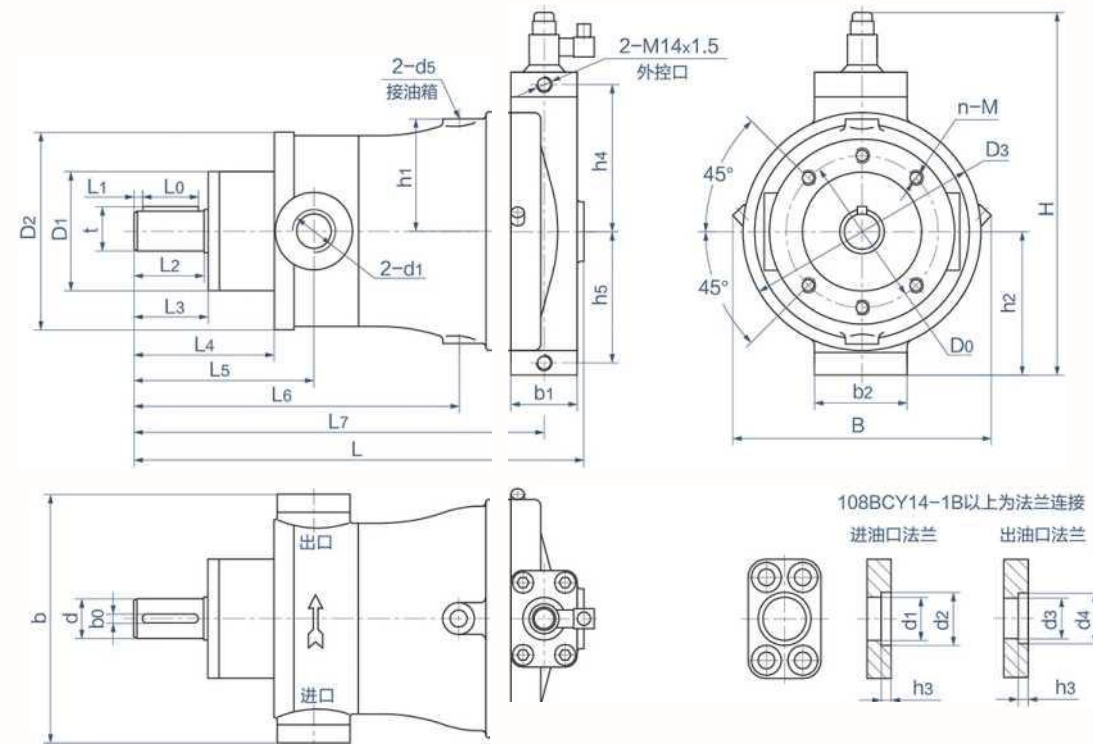


尺寸	10(16)ZCY	25ZCY	(32)40ZCY	63(80)ZCY	108ZCY	160ZCY	250ZCY	400ZCY
b	142	172	178	200	270	330	420	420
bo(h9)	8	8	8	12	12	16	18	18
bi	50	66	66	74	74	100	100	100
b2	88	100	100	104	104	120	140	140
Do	4>100	0125	0125	<M55	4>155	0198	0 230	4)230
Di(f9)	4)75	<l) 100	4>100	<t>120	E20	<t>150	0180	4) 180
D2	0125	4>150	0150	4>190	4) 190	4) 240	*280	<P280
D3	0150	0170	4>170	0 225	0225	<t>300	4)360	\$360
d(h6)	\$25	4)30	4)30		4) 40	4) 55	4) 60	φ60
d2 (d4)					<t>60	4) 64	4>81(<t> 76)	φ76
di(d3)	M22x1.5	M33x2	M42x2	M42(M48)x2	<l) 50	<P55	<t>75(4> 65)	φ65
d5	M14x1.5	M14x1.5	M14x1.5	M18x1.5	M22x1.5	M22x1.5	M27x2	M27x2
d6	M14x1.5	M14x1.5	M14x1.5	M14x1.5	M14x1.5	M18x1.5	M18x1.5	M18x1.5
d7	M6	M8	M8	M8	M8	M8	M8	M8
H	235	287	287	336	336	376	437	437
Ho	26	34.6	34.6	41.4	41.4	45	55.6	55.6
hi	71	83	83	108	108	141	170	170
h2	94	123	123	142	142	168	203	203
h3					15	20	25	25
h4	13	20	20	22	22	20	22	22
h5	85	110	110	128	128	155	187	187
h6	95	122	122	144	144	160	193	193
L	295	362	362	440	450	595	691	701
LO	30	45	45	50	50	100	100	100
L1	4	4	4	4	4	4	5	5
L2	40	52	52	60	60	106	110	110
L3	41	54	54	62	62	110	112	112
L4	86	104	104	122	122	180	212	212
L5	109	134	134	157	162	230	272	277
L6	194	237	237	300	310	411	492	502
L7	258	317	317	389	399	533	629	639
M	4-M10x25	4-M10x25	4-M10x25	4-M12x25	4-M12x25	6-M16x35	6-M20x45	6-M20x45
t	28	33	33	42.8	42.8	59	63.9	63.9

尺寸型号	10(16)MYCY	25MYCY	(32)40MYCY	63(80)MYCY	108MYCY	160MYCY
B	172	195	195	258	258	322
b	142	172	178	200	270	330
bo(h9)	8	8	8	12	12	16
bi	50	66	66	74	74	100
b2	88	100	100	104	104	120
Do	<t>100	4>125	4>125	<P155	0155	0198
Di(f9)	4)75	0100	4>100	4>120	4>120	<P150
D2	4>125	4)150	<P150	\$190	4>190	0240
D3	4>150	4)170	4)170	4>225	<P225	0300
d(h6)	4)25	4)30	0 30	4>40	<i>40	4) 55
d2 (d4)					<t>60	4>64
di(d3)	M22x1.5	M33x2	M42x2	M42(M48)x2	<P50	4>55
d5	M14x1.5	M14x1.5	M14x1.5	M18x1.5	M22x1.5	M22x1.5
H	286	332	332	381	381	487
hi	71	83	83	108	108	141
h2	132	150	150	178	178	207
h3					15	20
L	295	364	364	440	450	595
LO	30	45	45	50	50	100
L1	4	4	4	4	4	4
L2	40	52	52	60	60	106
L3	41	54	54	62	62	110
L4	86	104	104	122	122	180
L5	109	134	134	157	162	230
L6	194	237	237	300	310	411
L7	258	317	317	389	399	533
M	4-M10x25	4 - M10x 25	4-M10x25	4-M12x25	4-M12x25	6-M16x35
t	28	33	33	42.8	42.8	59

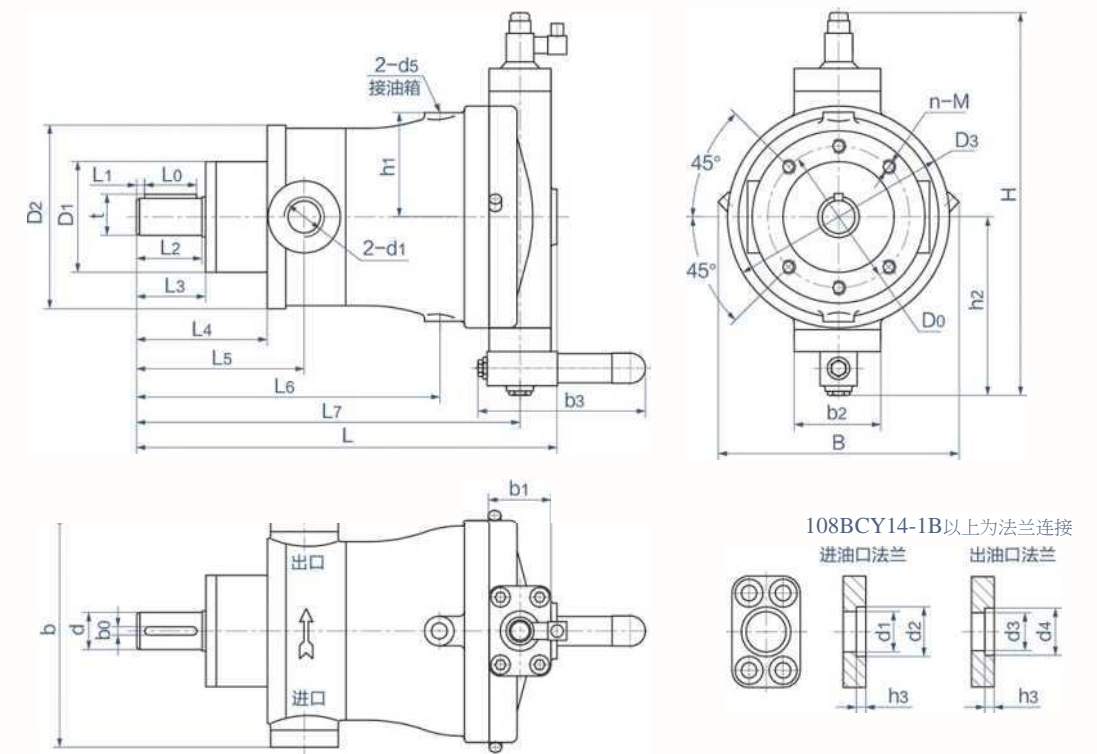
BCY14-1B外控变量轴向柱塞泵

Overall dimension of Axial Piston Pump Type BCY14-1B



BCY14-1B内控变量轴向柱塞泵

Overall dimension of Axial Piston Pump Type Internal control BCY14-1B



尺寸	型号	10(16)BCY	25BCY	(32)40BCY	63(80)BCY	108BCY	160BCY	250BCY	400BCY
B		172	195	195	258	258	322	385	385
b		142	172	178	200	270	330	420	420
bo(h9)		8	8	8	12	12	16	18	18
bi		50	66	66	74	74	100	100	100
b2		88	100	100	104	104	120	140	140
Do		0100	0125	<1)125	4)155	4)155	4)198	4)230	<t>230
DI(f9)		中75	4>100	4)100	4>120	4>120	0150	<t>180	<P180
D2		4>125	4>150	0150	4>190	中190	0240	0280	4>280
D3		4)150	4)170	(M70)	4)225	4)225	<t) 300	4 360	4>360
d(h6)		<t>25	0 30	4) 30	4) 40	(t>40	<t) 55	4) 60	4) 60
d2 (d4)						中60	4) 64	4>81(4> 76)	<P76
di(d3)		M22x1.5	M33x2	M42x2	M42(M48) x 2	中50	4>55	中 75(<P 65)	4>65
d5		M14x1.5	M14x1.5	M14x1.5	M18x1.5	M22x1.5	M22x1.5	M27x2	M27x2
H		300	318	318	350	350	415	485	485
hi		71	83	83	108	108	141	170	170
h2		104	110	110	140	140	173	210	210
h3						15	20	25	25
h4		65	80	80	127	127	157	193	193
h5		96.5	112	112	126	126	159	193	193
L		295	362	362	440	450	595	691	701
LO		30	45	45	50	50	100	100	100
L1		4	4	4	4	4	4	5	5
L2		40	52	52	60	60	106	110	110
L3		41	54	54	62	62	110	112	112
L4		86	104	104	122	122	180	212	212
L5		109	134	134	157	162	230	272	277
L6		194	237	237	300	310	411	492	502
L7		258	317	317	389	399	533	629	639
M		4-M10x25	4 - M1 O x 25	4-M10x25	4 - M12x25	4-M12x25	6-M16x35	6-M20x45	6-M20x45
t		28	33	33	42.8	42.8	59	63.9	63.9

尺寸	型号	10(16)BCY	25BCY	(32)40BCY	63(80)BCY	108BCY	160BCY	250BCY	400BCY
B		172	195	195	258	258	322	385	385
b		142	172	178	200	270	330	420	420
bo(h9)		8	8	8	12	12	16	18	18
bi		50	66	66	74	74	100	100	100
b2		88	100	100	104	104	120	140	140
b3		170	170	170	170	170	170	170	170
Do		4>100	4>125	4>125	0155	<P155	4) 198	0 230	中230
DI(f9)		4) 75	<P100	\$100	0120	4>120	4>150	4>180	0180
D2		\$125	0150	4)150	0190	<t>190	0 240	4>280	0 280
D3		4>150	E70	(M70)	4>225	中225	\$300	4)360	4) 360
d(h6)		4>25	4>30	4>30	4>40	4>40	4>55	4>60	中60
d2 (d4)						4) 60	064	4>81(中 76)	4) 76
di(d3)		M22x1.5	M33x2	M42x2	M42(M48) x 2	<t>50	4) 55	中 75(4) 65)	4) 65
d5		M14x1.5	M14x1.5	M14x1.5	M18x1.5	M22 x 1.5	M22x1.5	M27x2	M27x2
H		361	393	393	416	416	478	547	547
hi		71	83	83	108	108	141	170	170
h2		165	185	185	206	206	236	272	272
h3						15	20	25	25
L		295	362	362	440	450	595	691	701
LO		30	45	45	50	50	100	100	100
L1		4	4	4	4	4	4	5	5
L2		40	52	52	60	60	106	110	110
L3		41	54	54	62	62	110	112	112
L4		86	104	104	122	122	180	212	212
L5		109	134	134	157	162	230	272	277
L6		194	237	237	300	310	411	492	502
L7		258	317	317	389	399	533	629	639
M		4 - M1 O x 25	4-M10x25	4-M10x25	4-M12x25	4 - M12x25	6 - M16x35	6-M20x45	6-M20x45
t		28	33	33	42.8	42.8	59	63.9	63.9

油泵电机组合

The oil pump motor combination



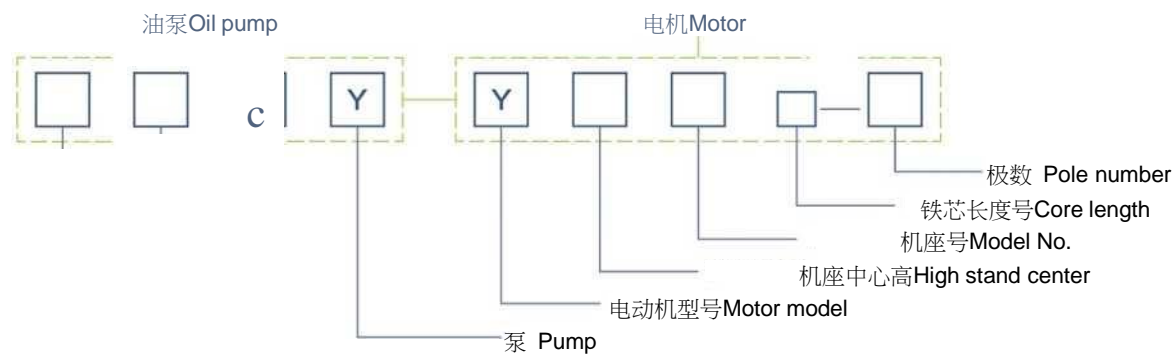
参数理论值) The Parameter List (theoretical values)

表 1

型号 Model	排量 displacement ml/rev	额定压力 Rated power MPa	额定转速 Rated power (r/min)	功率 Power KW	变量形式 Variable form								
					C	Y	D	SM	pL	Z	MY	B	
10*CY-Y**	10	31.5	1000s 1500	2.2-11	√	√	√	√	√	√	√	√	√
25*CY-Y**	25		1000x 1500	3~22	√	√	√	√	√	√	√	√	√
40*CY-Y**	40		1000、1500	5.5~22	√	√	√	√	√	√	√	√	√
63*CY-Y**	63		1000、1500	7.5~55	√	√	√	√	√	√	√	√	√
80*CY-Y**	80		1000s 1500	7.5~55	√	√	√	√	√	√	√	√	√
108*CY-Y**	108		1000、1500	11-55	√	√	√	√	√	√	√	√	√
160*CY-Y**	160		1000s 1500	22-132	√	√	√	√	√	√	√	√	√
250*CY-Y**	250		1000x 1500	30~132	√	√	√	√	√	√	√	√	√
400*CY-Y**	400	21	1000	37~132	√	√	√	√	√	√	√	√	

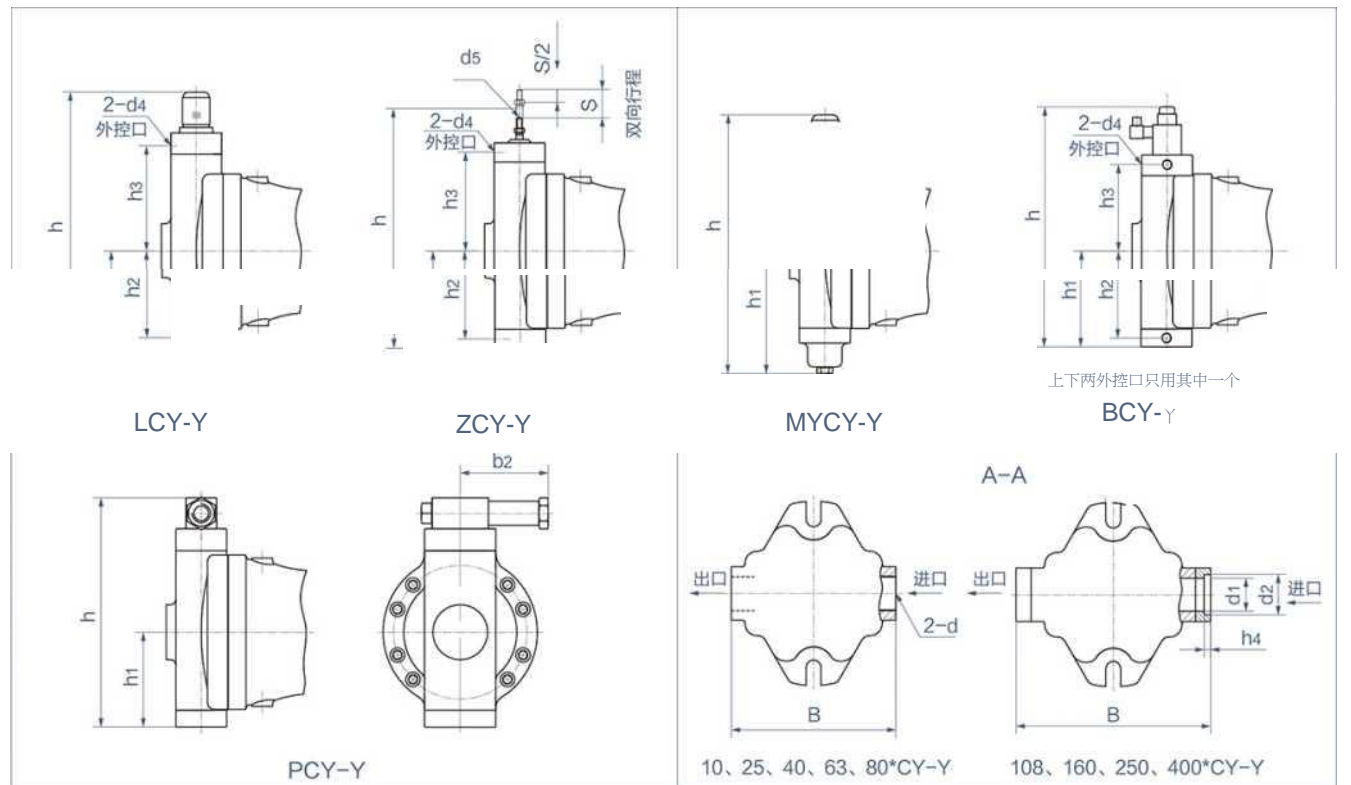
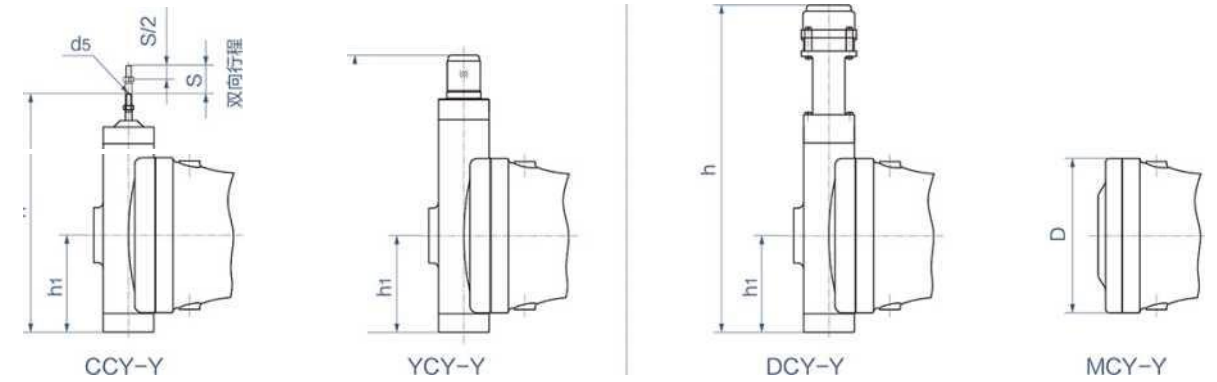
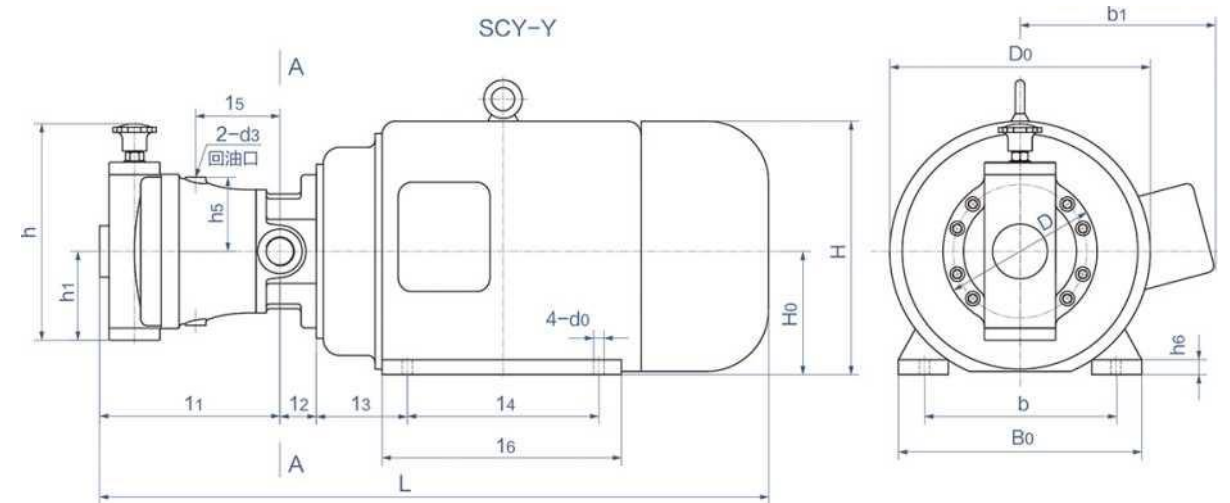
备注：表 1 中“*”者表示我厂可供产品 Note: “√” Signifies Product availability

型号说明 Ordering code



- 额定压力 Rated pressure C - (31.5MPa)
- C 机动(伺服)变量 Mechanically(servo) operated 压力补偿变量 Pressure compensation control
 - Y 电动变量 Electrically control 手动变量 Manual control
 - S 定量 Fix displacement control
 - P 恒压变量 Constant pressure control
 - L 零位对中液动变量 Null position centered with pilot control
 - Z 液动变量 Hydraulic variable control
 - MY 定级变量 Grading variables control
 - B 电液比例变量 Electro-hydraulic proportional control
- 公称排量 Nominal displacement

in 外形尺寸 Overall dimension (表 2·3·4)



使用须知

Utilization Notice



- ① 油泵可以用支座或法兰安装，泵和原动机应采用共同的基础支座，法兰和基础都应有足够的刚性，对于流量大于(或等于)160L/min的泵，不宜安装在油箱上。

The oil pump can be installed by support or flange. The pump and prime motor shall utilize the same basic support. Both the flange and base shall have adequate rigidity. The pump with a flow of above (or equal to) 160L/min shall not be installed on the oil tank.

泵的传动轴与原动机输出轴间的同轴度误差应不大于 $e 0.05$ 。

The co-axiality error between pump transmission bearing and prime motor output bearing shall not exceed $e 0.05$.

- ③ 泵和原动机输出轴间应采用弹性联轴器联接，并严禁在泵轴上安装皮带轮或齿轮驱动油泵，若一定要用皮带轮或齿轮与泵联接，则应加一对支座来安装皮带轮或齿轮，该支座与泵轴的同轴度误差应不大于 0.05 。

The pump and prime motor output bearing shall be connected by flexible coupler. It is forbidden to install belt wheel or gear in the pump bearing to drive the oil pump. Once it is a must to connect with pump by belt wheel or gear, a pair of support shall be installed for the installation. The co-axiality error between support and pump bearing shall not exceed 0.05 .

- ④ 油箱设计，接管布置与辅件设置等，都应符合机械工业出版社92版“机械设计手册”5卷P727中的要求或其它手册中的有关规定，且在油箱灌油之前，油箱、管道须经酸洗或磷化处理，整个系统应清洁干净，灌油时应采用滤油机对油液进行滤清。

The oil tank design, piping collocation and auxiliary parts setup shall be in strict adherence to relevant requirements in 1992 Edition "Mechanical Design Manual" Volume V, P727 published by Machinery Industry Press or relevant stipulations in other manuals. Before oil filling into the oil tank, the pipes must undergo acid flushing or phosphating disposal. The whole system shall be clean and tidy. During the oil filling, the oil filter shall be utilized to filtrate the oil liquid.

- ③ 在使用过程中，严禁由于系统发热而将油箱盖或注油孔打开，防止灰尘及其他脏物进入油箱。

During the utilization, it is forbidden to open the oil tank cover or refueling hole due to system heat generation to prevent dust and other dirt from entering into the oil tank.

- ④ 油泵宜采用倒灌自吸，不得已而将油泵安装在油箱上或立式安装自吸时，自吸高度不得大于500mm，且限于全排量启动。

The oil pump shall better adopt reverse filling and self-absorption method. Once it is a must to install oil pump on the oil tank or vertical installation and self-absorption are realized, the self-absorption height shall not exceed 500mm. Besides, it is only limited to startup by total discharge volume.

- ① 在油泵的吸油管道上不允许安装滤油器，吸油管道通径不小于推荐的数值，吸油管道上的截止阀通径应比吸油管道通径大一挡，吸油管道长 $L < 2500$ mm，管道弯头不多于两个。

It is forbidden to install oil filter in the oil suction pipe of oil pump. The drift diameter of oil suction pipe shall not be less than the recommended value. The drift diameter of stop valve in the oil suction pipe shall be one level higher than that of oil suction pipe. The oil suction pipe shall have a length of $L < 2500$ mm and there shall be at most two pipe elbows.

④ 油泵的泄油管应直接接油箱，回油背压应不大于0.05MPa。

The oil discharge pipe of oil pump shall be directly connected with the oil tank. The oil returning back-pressure shall not exceed 0.05MPa.

② 油泵启动前，必须通过泵壳上的泄油口向泵内灌满清洁的工作油，启动时应先点动数次，油流方向和声音都正常后，在低压下运转5-10分钟，然后投入正常运行。

Before oil pump startup, clean working oil must be filled into the pump through the oil discharge outlet of pump crust. During the startup, the oil pump shall be inching for several times. Upon normal operation of oil flow direction and sound, the oil pump shall operate for 5-10 minutes under low pressure and then enter into normal operation.

⑧ 工作介质：推荐使用N32或N46抗磨液压油。如使用其他液压油，要求E50=3-5,黏度指数大于90。油泵的正常 使用温度为15°C-65°C,当使用中超出这一温度范围时，必须在液压系统中安装加热或冷却装置。

Work medium: N32 or N46 anti-wear hydraulic oil is recommended. Once other hydraulic oil is utilized, it is required to have E50=3—>5 and viscosity index above 90. The normal utilization temperature of oil pump shall be 15°C-65°C. Once this temperature scope is exceeded, the heating or cooling device must be installed in the hydraulic system.